

Datasheet for ABIN655336
anti-Endothelin 1 antibody (Center)

5 Images

[Go to Product page](#)

Overview

Quantity:	400 µL
Target:	Endothelin 1 (EDN1)
Binding Specificity:	AA 111-138, Center
Reactivity:	Human
Host:	Rabbit
Clonality:	Polyclonal
Conjugate:	This Endothelin 1 antibody is un-conjugated
Application:	Western Blotting (WB), Immunofluorescence (IF), Immunohistochemistry (Paraffin-embedded Sections) (IHC (p)), Flow Cytometry (FACS)

Product Details

Immunogen:	This EDN1 antibody is generated from rabbits immunized with a KLH conjugated synthetic peptide between 111-138 AA from the Central region of human EDN1.
Clone:	RB29306
Isotype:	Ig Fraction
Specificity:	This EDN1 antibody is generated from rabbits immunized with a KLH conjugated synthetic peptide between 118-146 amino acids from the Central region of human EDN1.
Purification:	This antibody is purified through a protein A column, followed by peptide affinity purification.

Target Details

Target:	Endothelin 1 (EDN1)
---------	---------------------

Target Details

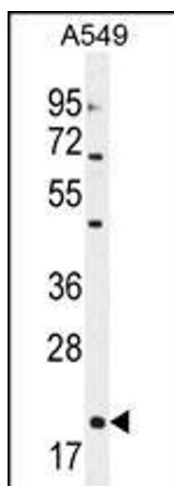
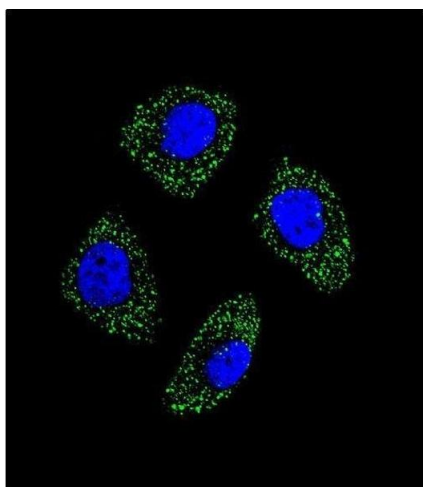
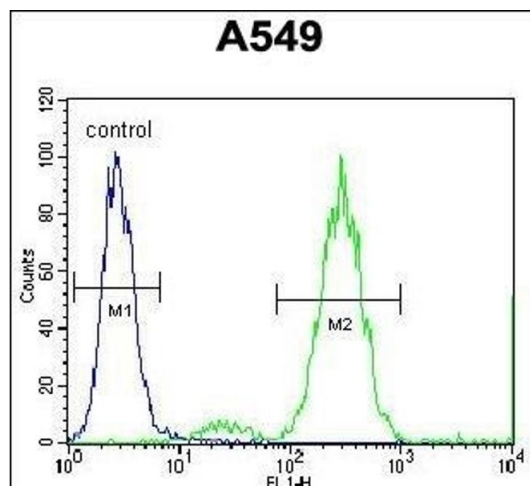
Alternative Name:	EDN1 (EDN1 Products)
Background:	<p>The protein encoded by this gene is proteolytically processed to release a secreted peptide termed endothelin 1. This peptide is a potent vasoconstrictor and is produced by vascular endothelial cells. Endothelin 1 also can affect the central nervous system. Two transcript variants encoding different isoforms have been found for this gene.</p> <p>Synonyms: Endothelin-1,EDN1,</p>
Molecular Weight:	24425 DA
Gene ID:	1906
NCBI Accession:	NP_001946 , NP_001161791
UniProt:	P05305
Pathways:	Hormone Transport , Negative Regulation of Hormone Secretion , Regulation of Systemic Arterial Blood Pressure by Hormones , cAMP Metabolic Process , Regulation of Muscle Cell Differentiation , Regulation of G-Protein Coupled Receptor Protein Signaling , Regulation of Cell Size

Application Details

Application Notes:	WB = 1:1000, IHC (p) = 1:50-100, IF = 1:10-50, FACS = 1:10-50
Restrictions:	For Research Use only

Handling

Format:	Liquid
Concentration:	0.26 mg/mL
Buffer:	PBS with 0.09 % (W/V) sodium azide
Preservative:	Sodium azide
Precaution of Use:	This product contains sodium azide: a POISONOUS AND HAZARDOUS SUBSTANCE which should be handled by trained staff only.
Storage:	4 °C/-20 °C
Storage Comment:	Maintain refrigerated at 2-8 °C for up to 6 months. For long term storage store at -20 °C in small aliquots to prevent freeze-thaw cycles.
Expiry Date:	6 months



Flow Cytometry

Image 1. EDN1 Antibody (Center) flow cytometric analysis of A549 cells (right histogram) compared to a negative control cell (left histogram). FITC-conjugated goat-anti-rabbit secondary antibodies were used for the analysis.

Immunofluorescence

Image 2. Confocal immunofluorescent analysis of EDN1 Antibody (Center) with A549 cell followed by Alexa Fluor 488-conjugated goat anti-rabbit IgG (green). DI was used to stain the cell nuclear (blue).

Western Blotting

Image 3. EDN1 Antibody (Center) western blot analysis in A549 cell line lysates (35 μ g/lane). This demonstrates the EDN1 antibody detected the EDN1 protein (arrow).

Please check the [product details page](#) for more images. Overall 5 images are available for ABIN655336.