

Datasheet for ABIN655338
anti-PATL2 antibody (AA 168-196)



[Go to Product page](#)

3 Images

Overview

Quantity:	400 µL
Target:	PATL2
Binding Specificity:	AA 168-196
Reactivity:	Human
Host:	Rabbit
Clonality:	Polyclonal
Conjugate:	This PATL2 antibody is un-conjugated
Application:	Western Blotting (WB), Immunofluorescence (IF), Immunohistochemistry (Paraffin-embedded Sections) (IHC (p))

Product Details

Immunogen:	This PATL2 antibody is generated from rabbits immunized with a KLH conjugated synthetic peptide between 168-196 amino acids from the Central region of human PATL2.
Clone:	RB29364
Isotype:	Ig Fraction
Purification:	This antibody is purified through a protein A column, followed by peptide affinity purification.

Target Details

Target:	PATL2
Alternative Name:	PATL2 (PATL2 Products)

Target Details

Molecular Weight:	61464
Gene ID:	197135
NCBI Accession:	NP_001138584
UniProt:	C9JE40

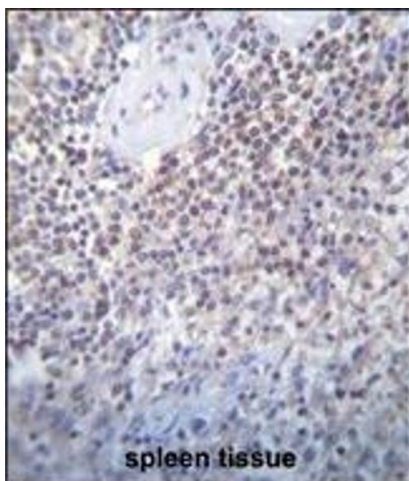
Application Details

Application Notes:	IF: 1:10~50. WB: 1:1000. IHC-P: 1:10~50
Restrictions:	For Research Use only

Handling

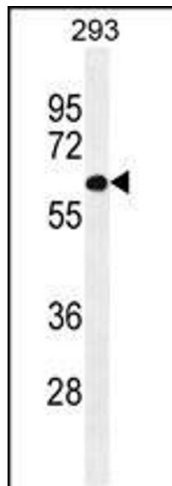
Format:	Liquid
Buffer:	Purified polyclonal antibody supplied in PBS with 0.09 % (W/V) sodium azide.
Preservative:	Sodium azide
Precaution of Use:	This product contains Sodium azide: a POISONOUS AND HAZARDOUS SUBSTANCE which should be handled by trained staff only.
Storage:	4 °C,-20 °C
Storage Comment:	Maintain refrigerated at 2-8 °C for up to 6 months. For long term storage store at -20 °C in small aliquots to prevent freeze-thaw cycles.
Expiry Date:	6 months

Images



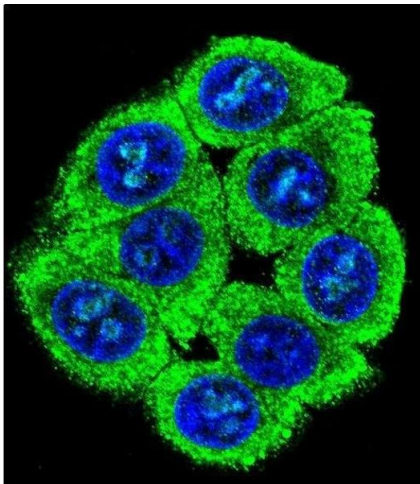
Immunohistochemistry (Paraffin-embedded Sections)

Image 1. TL2 Antibody (Center) (ABIN655338 and ABIN2844903) immunohistochemistry analysis in formalin fixed and raffin embedded human spleen tissue followed by peroxidase conjugation of the secondary antibody and DAB staining. This data demonstrates the use of TL2 Antibody (Center) for immunohistochemistry. Clinical relevance has not been evaluated.



Western Blotting

Image 2. TL2 Antibody (Center) (ABIN655338 and ABIN2844903) western blot analysis in 293 cell line lysates (35 µg/lane). This demonstrates the TL2 antibody detected the TL2 protein (arrow).



Immunofluorescence

Image 3. Confocal immunofluorescent analysis of TL2 Antibody (Center) (ABIN655338 and ABIN2844903) with 293 cell followed by Alexa Fluor 488-conjugated goat anti-rabbit IgG (green). DAPI was used to stain the cell nuclear (blue).