



Datasheet for ABIN655343
anti-PTCHD1 antibody (AA 611-639)



[Go to Product page](#)

2 Images

Overview

Quantity:	400 µL
Target:	PTCHD1
Binding Specificity:	AA 611-639
Reactivity:	Mouse
Host:	Rabbit
Clonality:	Polyclonal
Conjugate:	This PTCHD1 antibody is un-conjugated
Application:	Western Blotting (WB), Immunohistochemistry (Paraffin-embedded Sections) (IHC (p))

Product Details

Immunogen:	This PTCHD1 antibody is generated from rabbits immunized with a KLH conjugated synthetic peptide between 611-639 amino acids from the Central region of human PTCHD1.
Clone:	RB29387
Isotype:	Ig Fraction
Purification:	This antibody is purified through a protein A column, followed by peptide affinity purification.

Target Details

Target:	PTCHD1
Alternative Name:	PTCHD1 (PTCHD1 Products)
Molecular Weight:	101341

Target Details

Gene ID: 139411

NCBI Accession: [NP_775766](#)

UniProt: [Q96NR3](#)

Application Details

Application Notes: WB: 1:1000. IHC-P: 1:10~50

Restrictions: For Research Use only

Handling

Format: Liquid

Buffer: Purified polyclonal antibody supplied in PBS with 0.09 % (W/V) sodium azide.

Preservative: Sodium azide

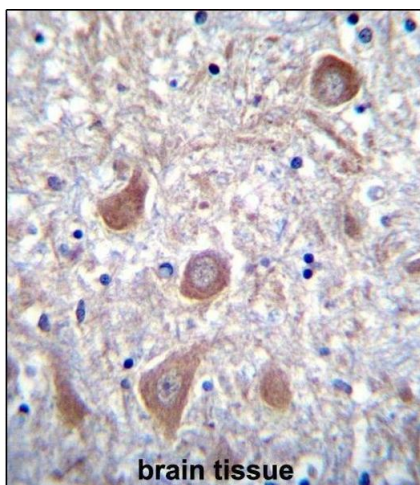
Precaution of Use: This product contains Sodium azide: a POISONOUS AND HAZARDOUS SUBSTANCE which should be handled by trained staff only.

Storage: 4 °C,-20 °C

Storage Comment: Maintain refrigerated at 2-8 °C for up to 6 months. For long term storage store at -20 °C in small aliquots to prevent freeze-thaw cycles.

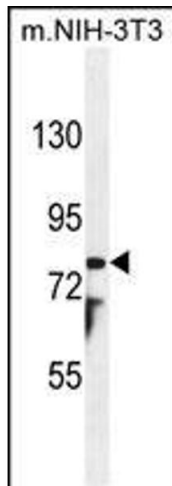
Expiry Date: 6 months

Images



Immunohistochemistry (Paraffin-embedded Sections)

Image 1. PTCHD1 Antibody (Center) (ABIN655343 and ABIN2844907) immunohistochemistry analysis in formalin fixed and paraffin embedded human brain tissue followed by peroxidase conjugation of the secondary antibody and DAB staining. This data demonstrates the use of PTCHD1 Antibody (Center) for immunohistochemistry. Clinical relevance has not been evaluated.



Western Blotting

Image 2. PTCHD1 Antibody (Center) (ABIN655343 and ABIN2844907) western blot analysis in mouse NIH-3T3 cell line lysates (35 µg/lane). This demonstrates the PTCHD1 antibody detected the PTCHD1 protein (arrow).