

Datasheet for ABIN655353
anti-CLVS2 antibody (C-Term)[Go to Product page](#)

2 Images

Overview

Quantity:	400 µL
Target:	CLVS2
Binding Specificity:	AA 251-279, C-Term
Reactivity:	Mouse
Host:	Rabbit
Clonality:	Polyclonal
Conjugate:	This CLVS2 antibody is un-conjugated
Application:	Western Blotting (WB), Immunohistochemistry (Paraffin-embedded Sections) (IHC (p))

Product Details

Immunogen:	This RLBP1L2 antibody is generated from rabbits immunized with a KLH conjugated synthetic peptide between 251-279 amino acids from the C-terminal region of human RLBP1L2.
Clone:	RB29409
Isotype:	Ig Fraction
Predicted Reactivity:	Pr, Rat
Purification:	This antibody is purified through a protein A column, followed by peptide affinity purification.

Target Details

Target:	CLVS2
Alternative Name:	RLBP1L2 (CLVS2 Products)

Target Details

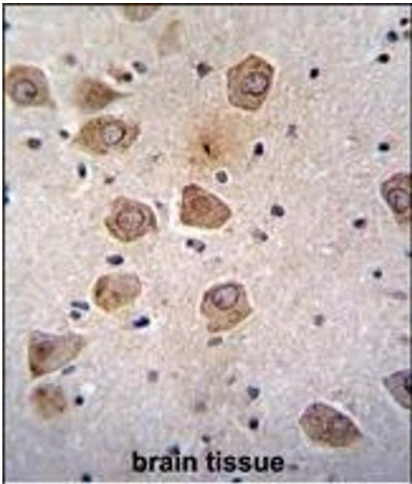
Background:	Required for normal morphology of late endosomes and/or lysosomes in neurons (By similarity). Binds phosphatidylinositol 3,5-bisphosphate (PtdIns(3,5)P2).
Molecular Weight:	38000
Gene ID:	134829
NCBI Accession:	NP_001010852
UniProt:	Q5SYC1

Application Details

Application Notes:	WB: 1:1000. IHC-P: 1:10~50
Restrictions:	For Research Use only

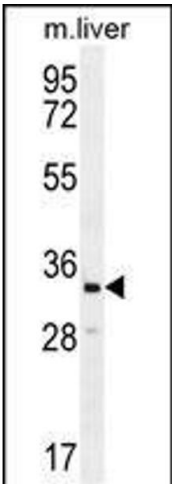
Handling

Format:	Liquid
Buffer:	Purified polyclonal antibody supplied in PBS with 0.09 % (W/V) sodium azide.
Preservative:	Sodium azide
Precaution of Use:	This product contains Sodium azide: a POISONOUS AND HAZARDOUS SUBSTANCE which should be handled by trained staff only.
Storage:	4 °C,-20 °C
Storage Comment:	Maintain refrigerated at 2-8 °C for up to 6 months. For long term storage store at -20 °C in small aliquots to prevent freeze-thaw cycles.
Expiry Date:	6 months



Immunohistochemistry (Paraffin-embedded Sections)

Image 1. RLBP1L2 Antibody (C-term) (ABIN655353 and ABIN2844912) immunohistochemistry analysis in formalin fixed and paraffin embedded human brain tissue followed by peroxidase conjugation of the secondary antibody and DAB staining. This data demonstrates the use of RLBP1L2 Antibody (C-term) for immunohistochemistry. Clinical relevance has not been evaluated.



Western Blotting

Image 2. RLBP1L2 Antibody (C-term) (ABIN655353 and ABIN2844912) western blot analysis in mouse liver tissue lysates (35 µg/lane). This demonstrates the RLBP1L2 antibody detected the RLBP1L2 protein (arrow).