

Datasheet for ABIN655356
anti-PTCHD3 antibody (C-Term)



[Go to Product page](#)

2 Images

Overview

Quantity:	400 µL
Target:	PTCHD3
Binding Specificity:	AA 689-717, C-Term
Reactivity:	Human
Host:	Rabbit
Clonality:	Polyclonal
Conjugate:	This PTCHD3 antibody is un-conjugated
Application:	Western Blotting (WB), Immunohistochemistry (Paraffin-embedded Sections) (IHC (p))

Product Details

Immunogen:	This PTCHD3 antibody is generated from rabbits immunized with a KLH conjugated synthetic peptide between 689-717 amino acids from the C-terminal region of human PTCHD3.
Clone:	RB29428
Isotype:	Ig Fraction
Purification:	This antibody is purified through a protein A column, followed by peptide affinity purification.

Target Details

Target:	PTCHD3
Alternative Name:	PTCHD3 (PTCHD3 Products)
Background:	May play a role in sperm development or sperm function.

Target Details

Molecular Weight:	86872
Gene ID:	374308
NCBI Accession:	NP_001030014
UniProt:	Q3KNS1

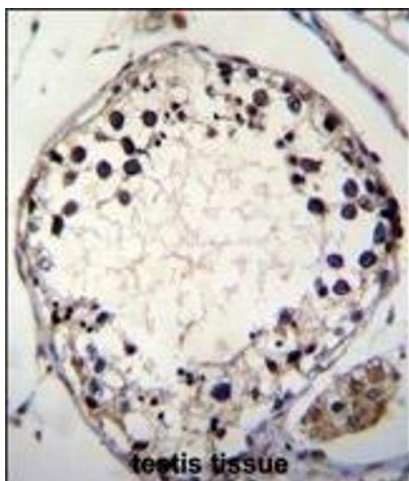
Application Details

Application Notes:	WB: 1:1000. IHC-P: 1:10~50
Restrictions:	For Research Use only

Handling

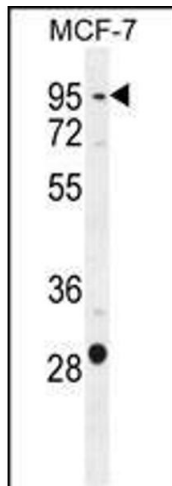
Format:	Liquid
Buffer:	Purified polyclonal antibody supplied in PBS with 0.09 % (W/V) sodium azide.
Preservative:	Sodium azide
Precaution of Use:	This product contains Sodium azide: a POISONOUS AND HAZARDOUS SUBSTANCE which should be handled by trained staff only.
Storage:	4 °C,-20 °C
Storage Comment:	Maintain refrigerated at 2-8 °C for up to 6 months. For long term storage store at -20 °C in small aliquots to prevent freeze-thaw cycles.
Expiry Date:	6 months

Images



Immunohistochemistry (Paraffin-embedded Sections)

Image 1. PTCHD3 Antibody (C-term) (ABIN655356 and ABIN2844915) immunohistochemistry analysis in formalin fixed and paraffin embedded human testis tissue followed by peroxidase conjugation of the secondary antibody and DAB staining. This data demonstrates the use of PTCHD3 Antibody (C-term) for immunohistochemistry. Clinical relevance has not been evaluated.



Western Blotting

Image 2. PTCHD3 Antibody (C-term) (ABIN655356 and ABIN2844915) western blot analysis in MCF-7 cell line lysates (35 µg/lane). This demonstrates the PTCHD3 antibody detected the PTCHD3 protein (arrow).