



[Go to Product page](#)

Datasheet for ABIN655358
anti-SAMD7 antibody (AA 202-230)

2 Images

Overview

Quantity:	400 µL
Target:	SAMD7
Binding Specificity:	AA 202-230
Reactivity:	Human
Host:	Rabbit
Clonality:	Polyclonal
Conjugate:	This SAMD7 antibody is un-conjugated
Application:	Western Blotting (WB), Immunohistochemistry (Paraffin-embedded Sections) (IHC (p))

Product Details

Immunogen:	This SAMD7 antibody is generated from rabbits immunized with a KLH conjugated synthetic peptide between 202-230 amino acids from the Central region of human SAMD7.
Clone:	RB29437
Isotype:	Ig Fraction
Purification:	This antibody is purified through a protein A column, followed by peptide affinity purification.

Target Details

Target:	SAMD7
Alternative Name:	SAMD7 (SAMD7 Products)
Gene ID:	344658

Target Details

NCBI Accession: [NP_872416](#)

UniProt: [Q7Z3H4](#)

Application Details

Application Notes: WB: 1:1000. IHC-P: 1:10~50

Restrictions: For Research Use only

Handling

Format: Liquid

Buffer: Purified polyclonal antibody supplied in PBS with 0.09 % (W/V) sodium azide.

Preservative: Sodium azide

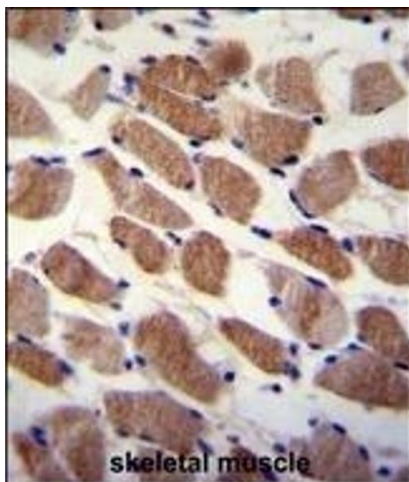
Precaution of Use: This product contains Sodium azide: a POISONOUS AND HAZARDOUS SUBSTANCE which should be handled by trained staff only.

Storage: 4 °C, -20 °C

Storage Comment: Maintain refrigerated at 2-8 °C for up to 6 months. For long term storage store at -20 °C in small aliquots to prevent freeze-thaw cycles.

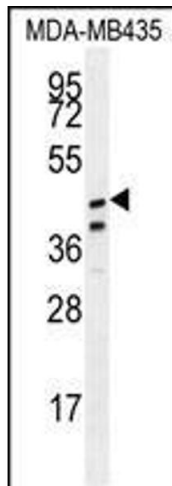
Expiry Date: 6 months

Images



Immunohistochemistry (Paraffin-embedded Sections)

Image 1. SD7 Antibody (Center) (ABIN655358 and ABIN2844917) immunohistochemistry analysis in formalin fixed and paraffin embedded human skeletal muscle followed by peroxidase conjugation of the secondary antibody and DAB staining. This data demonstrates the use of SD7 Antibody (Center) for immunohistochemistry. Clinical relevance has not been evaluated.



Western Blotting

Image 2. SD7 Antibody (Center) (ABIN655358 and ABIN2844917) western blot analysis in MDA-M cell line lysates (35 µg/lane). This demonstrates the SD7 antibody detected the SD7 protein (arrow).