

Datasheet for ABIN655364
anti-GAS2L2 antibody (C-Term)

3 Images

[Go to Product page](#)

Overview

Quantity:	400 µL
Target:	GAS2L2
Binding Specificity:	AA 763-791, C-Term
Reactivity:	Human
Host:	Rabbit
Clonality:	Polyclonal
Conjugate:	This GAS2L2 antibody is un-conjugated
Application:	Western Blotting (WB), Immunohistochemistry (Paraffin-embedded Sections) (IHC (p))

Product Details

Immunogen:	This GAS2L2 antibody is generated from rabbits immunized with a KLH conjugated synthetic peptide between 763-791 amino acids from the C-terminal region of human GAS2L2.
Clone:	RB29462
Isotype:	Ig Fraction
Purification:	This antibody is purified through a protein A column, followed by peptide affinity purification.

Target Details

Target:	GAS2L2
Alternative Name:	GAS2L2 (GAS2L2 Products)
Background:	Seems to be involved in the cross-linking of microtubules and microfilaments.

Target Details

Molecular Weight:	96520
Gene ID:	246176
NCBI Accession:	NP_644814
UniProt:	Q8NHY3

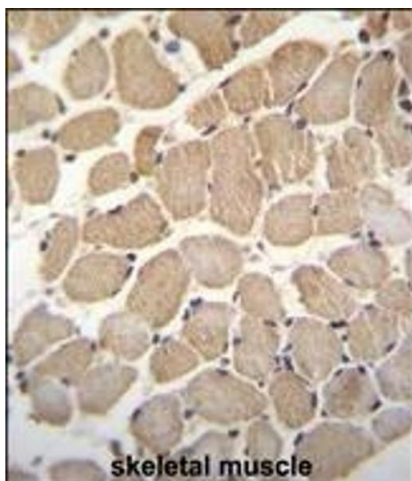
Application Details

Application Notes:	WB: 1:1000. WB: 1:1000. IHC-P: 1:10~50
Restrictions:	For Research Use only

Handling

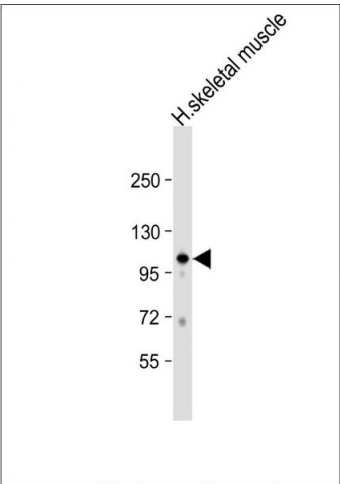
Format:	Liquid
Buffer:	Purified polyclonal antibody supplied in PBS with 0.09 % (W/V) sodium azide.
Preservative:	Sodium azide
Precaution of Use:	This product contains Sodium azide: a POISONOUS AND HAZARDOUS SUBSTANCE which should be handled by trained staff only.
Storage:	4 °C,-20 °C
Storage Comment:	Maintain refrigerated at 2-8 °C for up to 6 months. For long term storage store at -20 °C in small aliquots to prevent freeze-thaw cycles.
Expiry Date:	6 months

Images



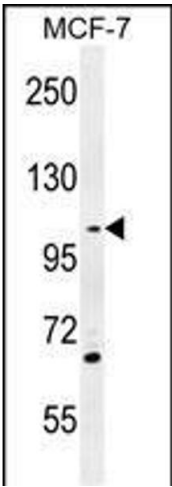
Immunohistochemistry (Paraffin-embedded Sections)

Image 1. GAS2L2 Antibody (C-term) (ABIN655364 and ABIN2844921) immunohistochemistry analysis in formalin fixed and paraffin embedded human skeletal muscle followed by peroxidase conjugation of the secondary antibody and DAB staining. This data demonstrates the use of GAS2L2 Antibody (C-term) for immunohistochemistry. Clinical relevance has not been evaluated.



Western Blotting

Image 2. Anti-GAS2L2 Antibody (C-term) at 1:1000 dilution + human skeletal muscle lysate Lysates/proteins at 20 µg per lane. Secondary Goat Anti-Rabbit IgG, (H+L), Peroxidase conjugated at 1/10000 dilution. Predicted band size : 97 kDa Blocking/Dilution buffer: 5 % NFDM/TBST.



Western Blotting

Image 3. GAS2L2 Antibody (C-term) (ABIN655364 and ABIN2844921) western blot analysis in MCF-7 cell line lysates (35 µg/lane). This demonstrates the GAS2L2 antibody detected the GAS2L2 protein (arrow).