



[Go to Product page](#)

Datasheet for ABIN655365
anti-PRAMEF6 antibody (C-Term)

4 Images

Overview

Quantity:	400 µL
Target:	PRAMEF6
Binding Specificity:	AA 395-423, C-Term
Reactivity:	Human
Host:	Rabbit
Clonality:	Polyclonal
Conjugate:	This PRAMEF6 antibody is un-conjugated
Application:	Western Blotting (WB), Flow Cytometry (FACS), Immunofluorescence (IF), Immunohistochemistry (Paraffin-embedded Sections) (IHC (p))

Product Details

Immunogen:	This PRAMEF6 antibody is generated from rabbits immunized with a KLH conjugated synthetic peptide between 395-423 amino acids from the C-terminal region of human PRAMEF6.
Clone:	RB29486
Isotype:	Ig Fraction
Purification:	This antibody is purified through a protein A column, followed by peptide affinity purification.

Target Details

Target:	PRAMEF6
Alternative Name:	PRAMEF6 (PRAMEF6 Products)

Target Details

Molecular Weight:	54852
Gene ID:	440561
NCBI Accession:	NP_001010889
UniProt:	Q5VXH4

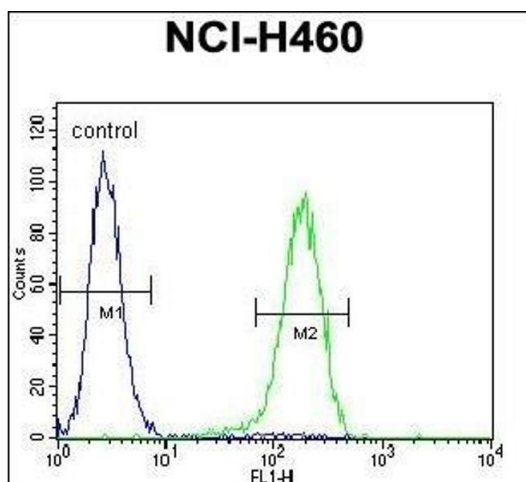
Application Details

Application Notes:	IF: 1:10~50. WB: 1:1000. IHC-P: 1:10~50. FC: 1:10~50
Restrictions:	For Research Use only

Handling

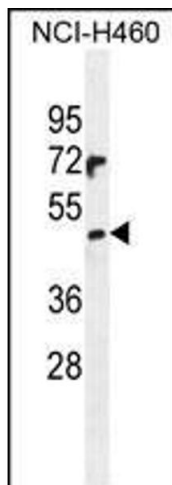
Format:	Liquid
Buffer:	Purified polyclonal antibody supplied in PBS with 0.09 % (W/V) sodium azide.
Preservative:	Sodium azide
Precaution of Use:	This product contains Sodium azide: a POISONOUS AND HAZARDOUS SUBSTANCE which should be handled by trained staff only.
Storage:	4 °C,-20 °C
Storage Comment:	Maintain refrigerated at 2-8 °C for up to 6 months. For long term storage store at -20 °C in small aliquots to prevent freeze-thaw cycles.
Expiry Date:	6 months

Images



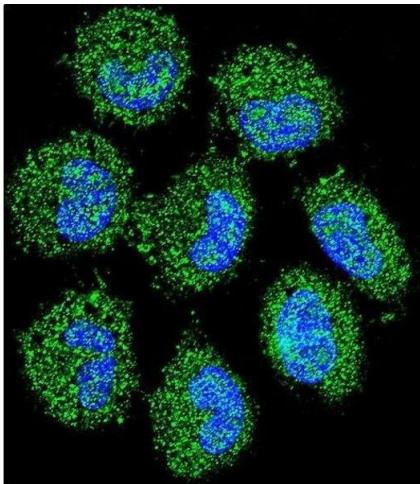
Flow Cytometry

Image 1. PREF6 Antibody (C-term) (ABIN655365 and ABIN2844922) flow cytometric analysis of NCI- cells (right histogram) compared to a negative control cell (left histogram). FITC-conjugated goat-anti-rabbit secondary antibodies were used for the analysis.



Western Blotting

Image 2. PREF6 Antibody (C-term) (ABIN655365 and ABIN2844922) western blot analysis in NCI- cell line lysates (35 µg/lane). This demonstrates the PREF6 antibody detected the PREF6 protein (arrow).



Immunofluorescence

Image 3. Confocal immunofluorescent analysis of PREF6 Antibody (C-term) (ABIN655365 and ABIN2844922) with NCI- cell followed by Alexa Fluor 488-conjugated goat anti-rabbit IgG (green). DAPI was used to stain the cell nuclear (blue).

Please check the [product details page](#) for more images. Overall 4 images are available for ABIN655365.