

Datasheet for ABIN655372
anti-GTF2H2C antibody (C-Term)



[Go to Product page](#)

3 Images

Overview

Quantity:	400 µL
Target:	GTF2H2C
Binding Specificity:	AA 314-343, C-Term
Reactivity:	Human
Host:	Rabbit
Clonality:	Polyclonal
Conjugate:	This GTF2H2C antibody is un-conjugated
Application:	Western Blotting (WB), Immunofluorescence (IF), Immunohistochemistry (Paraffin-embedded Sections) (IHC (p))

Product Details

Immunogen:	This GTF2H2C antibody is generated from rabbits immunized with a KLH conjugated synthetic peptide between 314-343 amino acids from the C-terminal region of human GTF2H2C.
Clone:	RB29520
Isotype:	Ig Fraction
Purification:	This antibody is purified through a protein A column, followed by peptide affinity purification.

Target Details

Target:	GTF2H2C
Alternative Name:	GTF2H2C (GTF2H2C Products)

Target Details

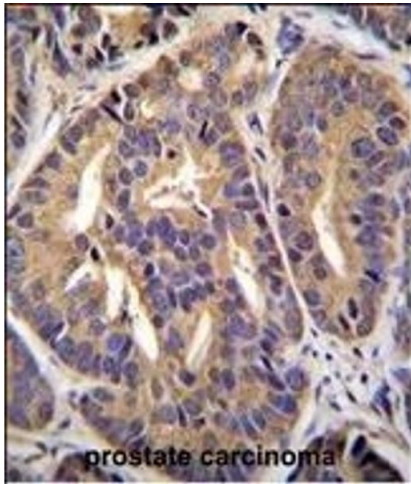
Background:	Component of the core-TFIID basal transcription factor involved in nucleotide excision repair (NER) of DNA and, when complexed to CAK, in RNA transcription by RNA polymerase II (By similarity).
Molecular Weight:	44452
Gene ID:	728340, 730394
NCBI Accession:	NP_001035955 , NP_001092198
UniProt:	Q6P1K8

Application Details

Application Notes:	IF: 1:10~50. WB: 1:1000. IHC-P: 1:10~50
Restrictions:	For Research Use only

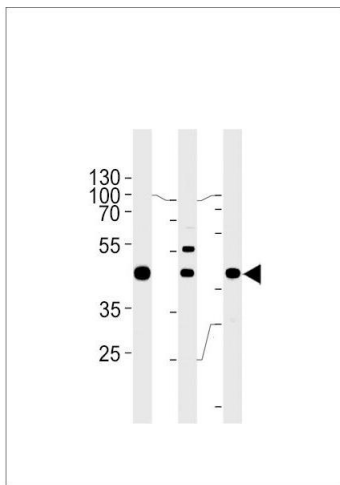
Handling

Format:	Liquid
Buffer:	Purified polyclonal antibody supplied in PBS with 0.09 % (W/V) sodium azide.
Preservative:	Sodium azide
Precaution of Use:	This product contains Sodium azide: a POISONOUS AND HAZARDOUS SUBSTANCE which should be handled by trained staff only.
Storage:	4 °C, -20 °C
Storage Comment:	Maintain refrigerated at 2-8 °C for up to 6 months. For long term storage store at -20 °C in small aliquots to prevent freeze-thaw cycles.
Expiry Date:	6 months



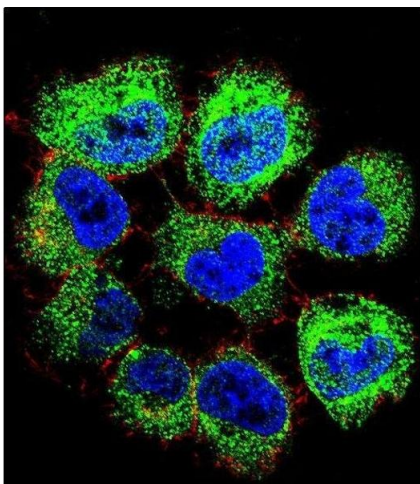
Immunohistochemistry (Paraffin-embedded Sections)

Image 1. GTF2H2C Antibody (C-term) (ABIN655372 and ABIN2844928) immunohistochemistry analysis in formalin fixed and paraffin embedded human prostate carcinoma followed by peroxidase conjugation of the secondary antibody and DAB staining. This data demonstrates the use of GTF2H2C Antibody (C-term) for immunohistochemistry. Clinical relevance has not been evaluated.



Western Blotting

Image 2. GTF2H2C Antibody (C-term) (ABIN655372 and ABIN2844928) western blot analysis in A549, K562, MCF-7 cell line lysates (35 µg/lane). This demonstrates the GTF2H2C antibody detected the GTF2H2C protein (arrow).



Immunofluorescence

Image 3. Confocal immunofluorescent analysis of GTF2H2C Antibody (C-term) (ABIN655372 and ABIN2844928) with NCI- cell followed by Alexa Fluor 488-conjugated goat anti-rabbit IgG (green). Actin filaments have been labeled with Alexa Fluor 555 phalloidin (red). DAPI was used to stain the cell nuclear (blue).