

Datasheet for ABIN655380
anti-KRBA2 antibody (AA 157-186)

2 Images

[Go to Product page](#)

Overview

Quantity:	400 µL
Target:	KRBA2
Binding Specificity:	AA 157-186
Reactivity:	Human
Host:	Rabbit
Clonality:	Polyclonal
Conjugate:	This KRBA2 antibody is un-conjugated
Application:	Western Blotting (WB), Immunofluorescence (IF)

Product Details

Immunogen:	This KRBA2 antibody is generated from rabbits immunized with a KLH conjugated synthetic peptide between 157-186 amino acids from the Central region of human KRBA2.
Clone:	RB29570
Isotype:	Ig Fraction
Purification:	This antibody is purified through a protein A column, followed by peptide affinity purification.

Target Details

Target:	KRBA2
Alternative Name:	KRBA2 (KRBA2 Products)
Molecular Weight:	56205

Target Details

Gene ID:	124751
NCBI Accession:	NP_998762
UniProt:	Q6ZNG9

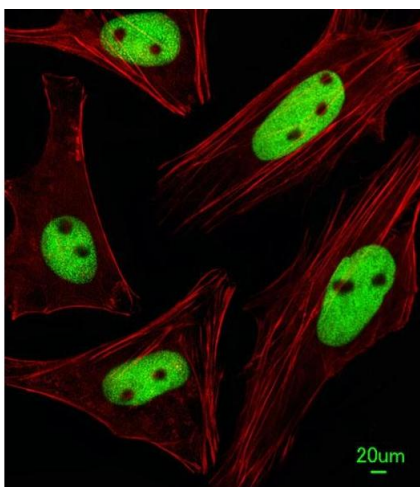
Application Details

Application Notes:	IF: 1:25. WB: 1:1000
Restrictions:	For Research Use only

Handling

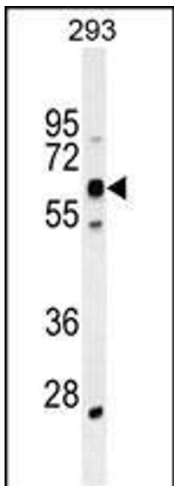
Format:	Liquid
Buffer:	Purified polyclonal antibody supplied in PBS with 0.09 % (W/V) sodium azide.
Preservative:	Sodium azide
Precaution of Use:	This product contains Sodium azide: a POISONOUS AND HAZARDOUS SUBSTANCE which should be handled by trained staff only.
Storage:	4 °C,-20 °C
Storage Comment:	Maintain refrigerated at 2-8 °C for up to 6 months. For long term storage store at -20 °C in small aliquots to prevent freeze-thaw cycles.
Expiry Date:	6 months

Images



Immunofluorescence

Image 1. Immunofluorescent analysis of HeLa cells, using KRBA2 Antibody (Center) (ABIN655380 and ABIN2844933). (ABIN655380 and ABIN2844933) was diluted at 1:25 dilution. Alexa Fluor 488-conjugated goat anti-rabbit IgG at 1:400 dilution was used as the secondary antibody (green). Cytoplasmic actin was counterstained with Dylight Fluor® 554 (red) conjugated Phalloidin (red).



Western Blotting

Image 2. KRBA2 Antibody (Center) (ABIN655380 and ABIN2844933) western blot analysis in 293 cell line lysates (35 µg/lane). This demonstrates the KCatA2 antibody detected the KCatA2 protein (arrow).