

Datasheet for ABIN655388
anti-CRHR1 antibody (AA 88-119)[Go to Product page](#)

2 Images

Overview

Quantity:	400 µL
Target:	CRHR1
Binding Specificity:	AA 88-119
Reactivity:	Human
Host:	Rabbit
Clonality:	Polyclonal
Conjugate:	This CRHR1 antibody is un-conjugated
Application:	Western Blotting (WB), Flow Cytometry (FACS)

Product Details

Immunogen:	This CRFR1 antibody is generated from rabbits immunized with a KLH conjugated synthetic peptide between 88-119 amino acids from human CRFR1.
Clone:	RB08910
Isotype:	Ig Fraction
Predicted Reactivity:	Rat
Purification:	This antibody is purified through a protein A column, followed by peptide affinity purification.

Target Details

Target:	CRHR1
Alternative Name:	CRFR1 (CRHR1 Products)

Target Details

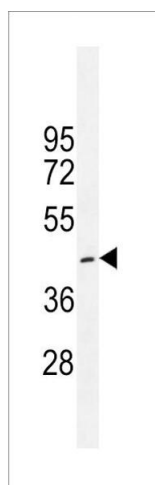
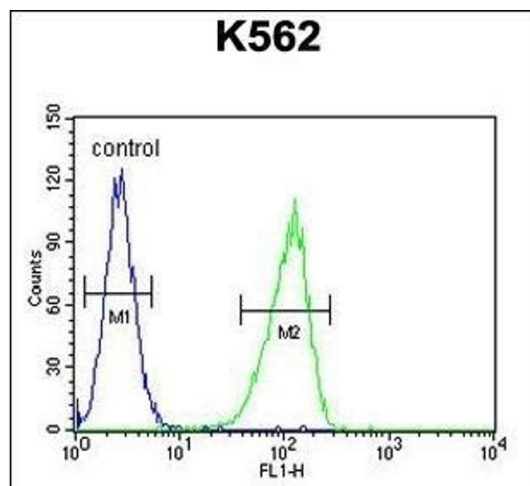
Background:	This gene encodes a G-protein coupled receptor that binds neuropeptides of the corticotropin releasing hormone family that are major regulators of the hypothalamic-pituitary-adrenal pathway. The encoded protein is essential for the activation of signal transduction pathways that regulate diverse physiological processes including stress, reproduction, immune response and obesity. Alternative splicing results in multiple transcript variants.
Molecular Weight:	50719
Gene ID:	1394
NCBI Accession:	NP_001138618 , NP_001138619 , NP_001138620 , NP_001243228 , NP_004373
UniProt:	P34998
Pathways:	Hormone Transport , cAMP Metabolic Process , Myometrial Relaxation and Contraction , Regulation of Leukocyte Mediated Immunity , Positive Regulation of Immune Effector Process , Feeding Behaviour , Negative Regulation of Transporter Activity

Application Details

Application Notes:	WB: 1:1000. FC: 1:10~50
Restrictions:	For Research Use only

Handling

Format:	Liquid
Buffer:	Purified polyclonal antibody supplied in PBS with 0.09 % (W/V) sodium azide.
Preservative:	Sodium azide
Precaution of Use:	This product contains Sodium azide: a POISONOUS AND HAZARDOUS SUBSTANCE which should be handled by trained staff only.
Storage:	4 °C,-20 °C
Storage Comment:	Maintain refrigerated at 2-8 °C for up to 6 months. For long term storage store at -20 °C in small aliquots to prevent freeze-thaw cycles.
Expiry Date:	6 months



Flow Cytometry

Image 1. CRFR1 Antibody (ABIN655388 and ABIN2844936) flow cytometric analysis of K562 cells (right histogram) compared to a negative control cell (left histogram). FITC-conjugated goat-anti-rabbit secondary antibodies were used for the analysis.

Western Blotting

Image 2. CRFR1 Antibody (ABIN655388 and ABIN2844936) western blot analysis in K562 cell line lysates (35 μ g/lane). This demonstrates the CRFR1 antibody detected the CRFR1 protein (arrow).