

Datasheet for ABIN655389

**anti-CRHR2 antibody (AA 10-39)****3** Images[Go to Product page](#)

## Overview

Quantity:	400 µL
Target:	CRHR2
Binding Specificity:	AA 10-39
Reactivity:	Human
Host:	Rabbit
Clonality:	Polyclonal
Conjugate:	This CRHR2 antibody is un-conjugated
Application:	Western Blotting (WB), Flow Cytometry (FACS), Immunohistochemistry (Paraffin-embedded Sections) (IHC (p))

## Product Details

Immunogen:	This CRFR2 antibody is generated from rabbits immunized with a KLH conjugated synthetic peptide between 10-39 amino acids from human CRFR2.
Clone:	RB08932
Isotype:	Ig Fraction
Purification:	This antibody is purified through a protein A column, followed by peptide affinity purification.

## Target Details

Target:	CRHR2
Alternative Name:	CRFR2 ( <a href="#">CRHR2 Products</a> )

## Target Details

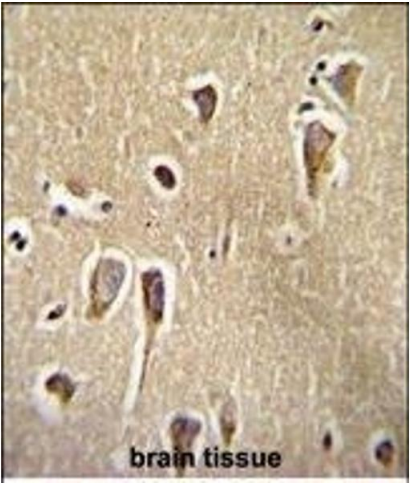
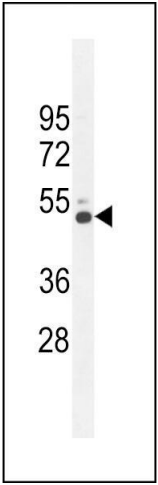
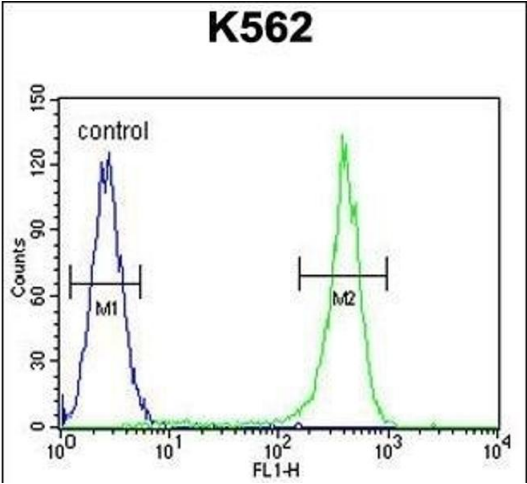
Background:	Liaw et al. (1996) [PubMed 8536644] stated that there are 2 G protein-coupled corticotropin-releasing hormone (CRH, MIM 122560) receptors, CRHR1 (MIM 122561) and CRHR2, which they termed the CRF2 receptor. CRH is a 41-amino acid peptide synthesized in the hypothalamus that is the principal neuroregulator of the hypothalamic-pituitary-adrenocortical axis and plays an important role in coordinating the endocrine, autonomic, and behavioral responses to stress and immune challenge.
Molecular Weight:	47688
Gene ID:	1395
NCBI Accession:	<a href="#">NP_001189404</a> , <a href="#">NP_001189410</a> , <a href="#">NP_001189411</a> , <a href="#">NP_001189412</a> , <a href="#">NP_001874</a>
UniProt:	<a href="#">Q13324</a>
Pathways:	<a href="#">Negative Regulation of Hormone Secretion</a> , <a href="#">cAMP Metabolic Process</a> , <a href="#">Feeding Behaviour</a>

## Application Details

Application Notes:	WB: 1:1000. IHC-P: 1:50~100. FC: 1:10~50
Restrictions:	For Research Use only

## Handling

Format:	Liquid
Buffer:	Purified polyclonal antibody supplied in PBS with 0.09 % (W/V) sodium azide.
Preservative:	Sodium azide
Precaution of Use:	This product contains Sodium azide: a POISONOUS AND HAZARDOUS SUBSTANCE which should be handled by trained staff only.
Storage:	4 °C,-20 °C
Storage Comment:	Maintain refrigerated at 2-8 °C for up to 6 months. For long term storage store at -20 °C in small aliquots to prevent freeze-thaw cycles.
Expiry Date:	6 months



### Flow Cytometry

**Image 1.** CRFR2 Antibody (D35) (ABIN655389 and ABIN2844937) flow cytometric analysis of K562 cells (right histogram) compared to a negative control cell (left histogram). FITC-conjugated goat-anti-rabbit secondary antibodies were used for the analysis.

### Western Blotting

**Image 2.** CRFR2 Antibody (D35) (ABIN655389 and ABIN2844937) western blot analysis in K562 cell line lysates (35 µg/lane). This demonstrates the CRFR2 antibody detected the CRFR2 protein (arrow).

### Immunohistochemistry (Paraffin-embedded Sections)

**Image 3.** CRFR2 Antibody (D35) (ABIN655389 and ABIN2844937) immunohistochemistry analysis in formalin fixed and paraffin embedded human brain tissue followed by peroxidase conjugation of the secondary antibody and DAB staining. This data demonstrates the use of CRFR2 Antibody (D35) for immunohistochemistry. Clinical relevance has not been evaluated.