

Datasheet for ABIN655398
anti-SP1 antibody (C-Term)

5 Images

1 Publication

[Go to Product page](#)

Overview

Quantity:	400 µL
Target:	SP1
Binding Specificity:	AA 677-707, C-Term
Reactivity:	Human
Host:	Rabbit
Clonality:	Polyclonal
Conjugate:	This SP1 antibody is un-conjugated
Application:	Western Blotting (WB), Immunofluorescence (IF), Immunohistochemistry (Paraffin-embedded Sections) (IHC (p)), Flow Cytometry (FACS)

Product Details

Immunogen:	This SP1 antibody is generated from rabbits immunized with a KLH conjugated synthetic peptide between 677-707 amino acids from the C-terminal region of human SP1.
Clone:	RB17350
Isotype:	Ig Fraction
Predicted Reactivity:	M, Rat
Purification:	This antibody is purified through a protein A column, followed by peptide affinity purification.

Target Details

Target:	SP1
---------	-----

Target Details

Alternative Name:	SP1 (SP1 Products)
Background:	Transcription factor that can activate or repress transcription in response to physiological and pathological stimuli. Binds with high affinity to GC-rich motifs and regulates the expression of a large number of genes involved in a variety of processes such as cell growth, apoptosis, differentiation and immune responses. Highly regulated by post-translational modifications (phosphorylations, sumoylation, proteolytic cleavage, glycosylation and acetylation). Binds also the PDGFR-alpha G-box promoter. May have a role in modulating the cellular response to DNA damage. Implicated in chromatin remodeling. Plays a role in the recruitment of SMARCA4/BRG1 on the c-FOS promoter. Plays an essential role in the regulation of FE65 gene expression.
Molecular Weight:	80693
Gene ID:	6667
NCBI Accession:	NP_001238754 , NP_003100 , NP_612482
UniProt:	P08047
Pathways:	Regulation of Lipid Metabolism by PPARalpha , Myometrial Relaxation and Contraction

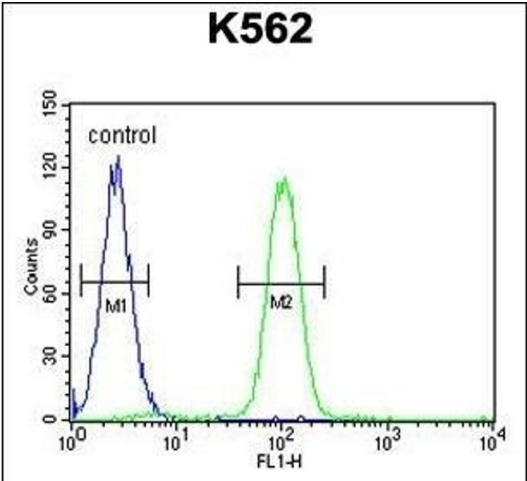
Application Details

Application Notes:	IF: 1:10~50. WB: 1:500. WB: 1:1000. IHC-P: 1:50~100. FC: 1:10~50
Restrictions:	For Research Use only

Handling

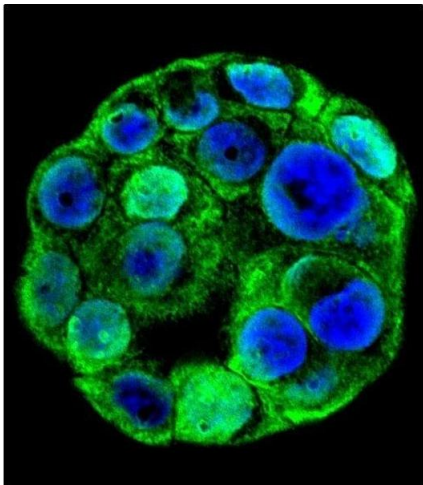
Format:	Liquid
Buffer:	Purified polyclonal antibody supplied in PBS with 0.09 % (W/V) sodium azide.
Preservative:	Sodium azide
Precaution of Use:	This product contains Sodium azide: a POISONOUS AND HAZARDOUS SUBSTANCE which should be handled by trained staff only.
Storage:	4 °C,-20 °C
Storage Comment:	Maintain refrigerated at 2-8 °C for up to 6 months. For long term storage store at -20 °C in small aliquots to prevent freeze-thaw cycles.
Expiry Date:	6 months

Product cited in: Zhang, Wang, Qin, Liu, Sun, Liu, Kuang, Jiang, Zhang: "cis-Acting elements and trans-acting factors in the transcriptional regulation of raf kinase inhibitory protein expression." in: **PLoS ONE**, Vol. 8, Issue 12, pp. e83097, (2014) ([PubMed](#)).



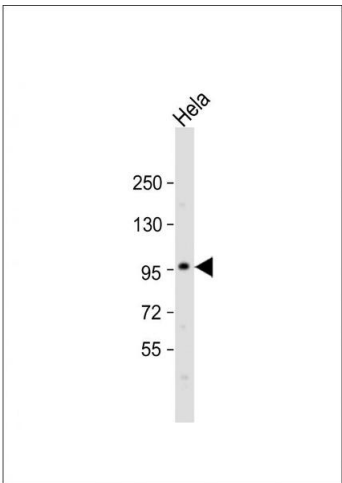
Flow Cytometry

Image 1. SP1 Antibody (C-term) (ABIN655398 and ABIN2844945) flow cytometric analysis of K562 cells (right histogram) compared to a negative control cell (left histogram). FITC-conjugated goat-anti-rabbit secondary antibodies were used for the analysis.



Immunofluorescence

Image 2. Confocal immunofluorescent analysis of SP1 Antibody (C-term) (ABIN655398 and ABIN2844945) with WiDr cell followed by Alexa Fluor 488-conjugated goat anti-rabbit IgG (green). DAPI was used to stain the cell nuclear (blue).



Western Blotting

Image 3. Anti-SP1 Antibody (C-term) at 1:500 dilution + HeLa whole cell lysate Lysates/proteins at 20 µg per lane. Secondary Goat Anti-Rabbit IgG, (H+L), Peroxidase conjugated at 1/10000 dilution. Predicted band size : 81 kDa Blocking/Dilution buffer: 5 % NFDm/TBST.

Images

Please check the [product details page](#) for more images. Overall 5 images are available for ABIN655398.