



[Go to Product page](#)

Datasheet for ABIN655409

anti-SCUBE2 antibody (AA 251-280)

3 Images

1 Publication

Overview

Quantity:	400 µL
Target:	SCUBE2
Binding Specificity:	AA 251-280
Reactivity:	Human
Host:	Rabbit
Clonality:	Polyclonal
Conjugate:	This SCUBE2 antibody is un-conjugated
Application:	Western Blotting (WB), Immunofluorescence (IF), Immunohistochemistry (Paraffin-embedded Sections) (IHC (p))

Product Details

Immunogen:	This SCUBE2 antibody is generated from rabbits immunized with a KLH conjugated synthetic peptide between 251-280 amino acids from the Central region of human SCUBE2.
Clone:	RB19840
Isotype:	Ig Fraction
Purification:	This antibody is purified through a protein A column, followed by peptide affinity purification.

Target Details

Target:	SCUBE2
Alternative Name:	SCUBE2 (SCUBE2 Products)

Target Details

Molecular Weight:	109957
Gene ID:	57758
NCBI Accession:	NP_001164161 , NP_066025
UniProt:	Q9NQ36

Application Details

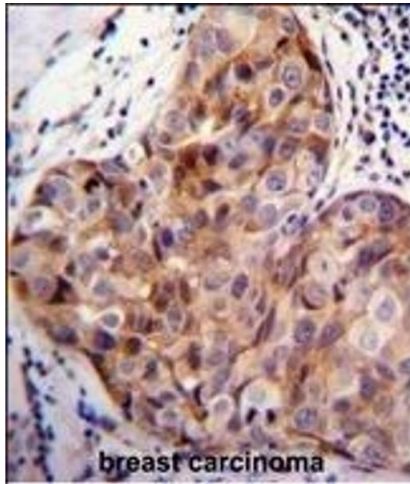
Application Notes:	IF: 1:10~50. WB: 1:1000. IHC-P: 1:50~100
Restrictions:	For Research Use only

Handling

Format:	Liquid
Buffer:	Purified polyclonal antibody supplied in PBS with 0.09 % (W/V) sodium azide.
Preservative:	Sodium azide
Precaution of Use:	This product contains Sodium azide: a POISONOUS AND HAZARDOUS SUBSTANCE which should be handled by trained staff only.
Storage:	4 °C, -20 °C
Storage Comment:	Maintain refrigerated at 2-8 °C for up to 6 months. For long term storage store at -20 °C in small aliquots to prevent freeze-thaw cycles.
Expiry Date:	6 months

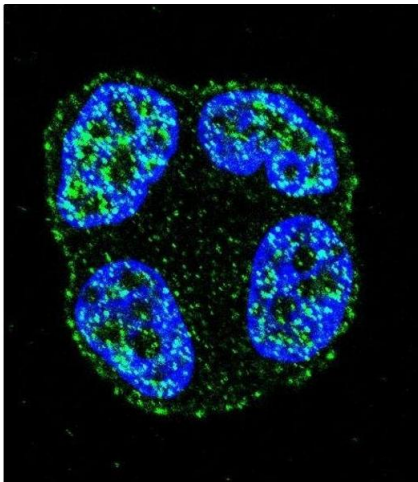
Publications

Product cited in:	Hasegawa, Patel, Ettehadieh, Li, Lim: "Topogenesis and cell surface trafficking of GPR34 are facilitated by positive-inside rule that effects through a tri-basic motif in the first intracellular loop." in: Biochimica et biophysica acta , Vol. 1863, Issue 7 Pt A, pp. 1534-51, (2016) (PubMed).
-------------------	---



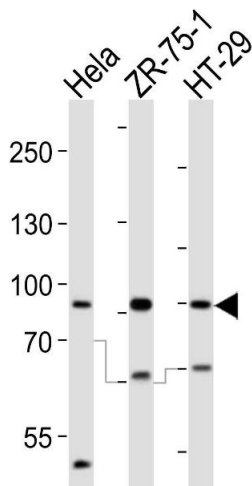
Immunohistochemistry (Paraffin-embedded Sections)

Image 1. SCUBE2 Antibody (Center) (ABIN655409 and ABIN2844955) immunohistochemistry analysis in formalin fixed and paraffin embedded human breast carcinoma followed by peroxidase conjugation of the secondary antibody and DAB staining. This data demonstrates the use of SCUBE2 Antibody (Center) for immunohistochemistry. Clinical relevance has not been evaluated.



Immunofluorescence

Image 2. Confocal immunofluorescent analysis of SCUBE2 Antibody (Center) (ABIN655409 and ABIN2844955) with ZR-75-1 cell followed by Alexa Fluor 488-conjugated goat anti-rabbit IgG (green). DAPI was used to stain the cell nuclear (blue).



Western Blotting

Image 3. Western blot analysis of lysates from HeLa, ZR-75-1, HT-29 cell line (from left to right), using SCUBE2 Antibody (Center) (ABIN655409 and ABIN2844955). (ABIN655409 and ABIN2844955) was diluted at 1:1000 at each lane. A goat anti-rabbit IgG H&L(HRP) at 1:10000 dilution was used as the secondary antibody. Lysates at 20 µg per lane.