



Datasheet for ABIN655413
anti-PM20D2 antibody (C-Term)



[Go to Product page](#)

3 Images

Overview

Quantity:	400 µL
Target:	PM20D2
Binding Specificity:	AA 396-425, C-Term
Reactivity:	Human
Host:	Rabbit
Clonality:	Polyclonal
Conjugate:	This PM20D2 antibody is un-conjugated
Application:	Western Blotting (WB), Immunofluorescence (IF), Immunohistochemistry (Paraffin-embedded Sections) (IHC (p))

Product Details

Immunogen:	This PM20D2 antibody is generated from rabbits immunized with a KLH conjugated synthetic peptide between 396-425 amino acids from the C-terminal region of human PM20D2.
Clone:	RB29048
Isotype:	Ig Fraction
Purification:	This antibody is purified through a protein A column, followed by peptide affinity purification.

Target Details

Target:	PM20D2
Alternative Name:	PM20D2 (PM20D2 Products)

Target Details

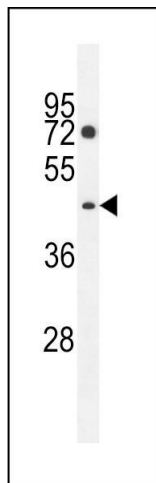
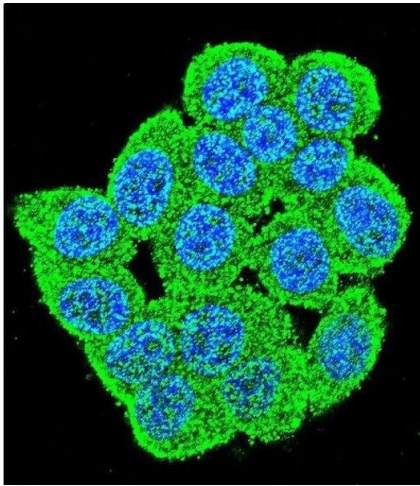
Background:	PM20D2 belongs to the peptidase M20A family. The function of PM20D2 remains unknown.
Molecular Weight:	47776
Gene ID:	135293
NCBI Accession:	NP_001010853
UniProt:	Q8IYS1

Application Details

Application Notes:	IF: 1:10~50. WB: 1:1000. IHC-P: 1:50~100
Restrictions:	For Research Use only

Handling

Format:	Liquid
Buffer:	Purified polyclonal antibody supplied in PBS with 0.09 % (W/V) sodium azide.
Preservative:	Sodium azide
Precaution of Use:	This product contains Sodium azide: a POISONOUS AND HAZARDOUS SUBSTANCE which should be handled by trained staff only.
Storage:	4 °C,-20 °C
Storage Comment:	Maintain refrigerated at 2-8 °C for up to 6 months. For long term storage store at -20 °C in small aliquots to prevent freeze-thaw cycles.
Expiry Date:	6 months



Immunofluorescence

Image 1. Confocal immunofluorescent analysis of D2 Antibody (C-term) (ABIN655413 and ABIN2844958) with HeLa cells followed by Alexa Fluor 488-conjugated goat anti-rabbit IgG (green). DAPI was used to stain the cell nuclei (blue).

Western Blotting

Image 2. D2 Antibody (C-term) (ABIN655413 and ABIN2844958) western blot analysis in K562 cell line lysates (35 µg/lane). This demonstrates the D2 antibody detected the D2 protein (arrow).

Immunohistochemistry (Paraffin-embedded Sections)

Image 3. D2 Antibody (C-term) (ABIN655413 and ABIN2844958) immunohistochemistry analysis in formalin fixed and paraffin embedded human placenta tissue followed by peroxidase conjugation of the secondary antibody and DAB staining. This data demonstrates the use of D2 Antibody (C-term) for immunohistochemistry. Clinical relevance has not been evaluated.