

Datasheet for ABIN655432
anti-TTLL13 antibody (AA 461-490)[Go to Product page](#)

2 Images

Overview

Quantity:	400 µL
Target:	TTLL13
Binding Specificity:	AA 461-490
Reactivity:	Human
Host:	Rabbit
Clonality:	Polyclonal
Conjugate:	This TTLL13 antibody is un-conjugated
Application:	Western Blotting (WB), Flow Cytometry (FACS)

Product Details

Immunogen:	This TTLL13 antibody is generated from rabbits immunized with a KLH conjugated synthetic peptide between 461-490 amino acids from the Central region of human TTLL13.
Clone:	RB29311
Isotype:	Ig Fraction
Purification:	This antibody is purified through a protein A column, followed by peptide affinity purification.

Target Details

Target:	TTLL13
Alternative Name:	TTLL13 (TTLL13 Products)
Background:	Polyglutamylase which preferentially modifies alpha-tubulin. Involved in the side-chain

Target Details

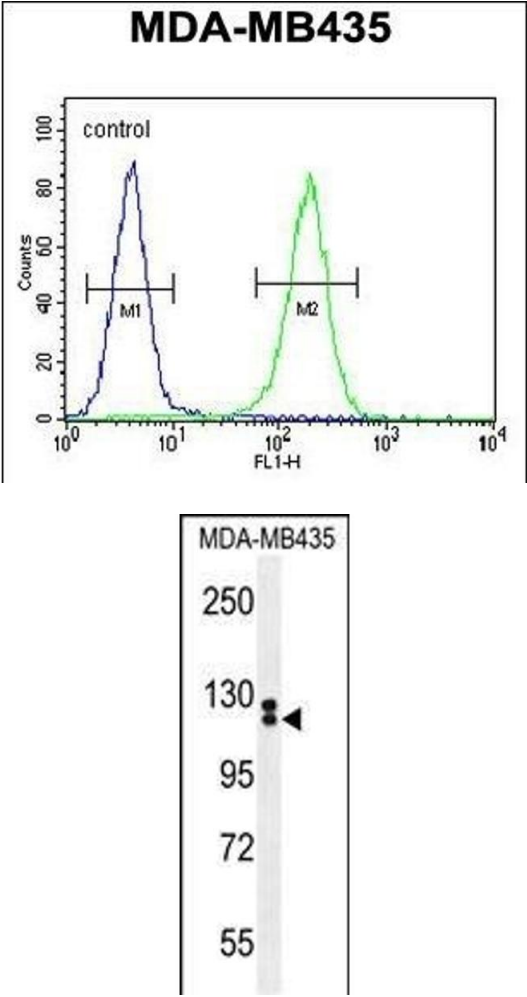
	elongation step of the polyglutamylolation reaction rather than in the initiation step (By similarity).
Molecular Weight:	93645
Gene ID:	440307
NCBI Accession:	NP_001025135
UniProt:	A6NNM8

Application Details

Application Notes:	WB: 1:1000. FC: 1:10~50
Restrictions:	For Research Use only

Handling

Format:	Liquid
Buffer:	Purified polyclonal antibody supplied in PBS with 0.09 % (W/V) sodium azide.
Preservative:	Sodium azide
Precaution of Use:	This product contains Sodium azide: a POISONOUS AND HAZARDOUS SUBSTANCE which should be handled by trained staff only.
Storage:	4 °C,-20 °C
Storage Comment:	Maintain refrigerated at 2-8 °C for up to 6 months. For long term storage store at -20 °C in small aliquots to prevent freeze-thaw cycles.
Expiry Date:	6 months



Flow Cytometry

Image 1. TTLL13 Antibody (Center) (ABIN655432 and ABIN2844968) flow cytometric analysis of MDA-M cells (right histogram) compared to a negative control cell (left histogram).FITC-conjugated goat-anti-rabbit secondary antibodies were used for the analysis.

Western Blotting

Image 2. TTLL13 Antibody (Center) (ABIN655432 and ABIN2844968) western blot analysis in MDA-M cell line lysates (35 μ g/lane).This demonstrates the TTLL13 antibody detected the TTLL13 protein (arrow).