



[Go to Product page](#)

Datasheet for ABIN655434

anti-TMEM132E antibody (C-Term)

3 Images

1 Publication

Overview

Quantity:	400 µL
Target:	TMEM132E
Binding Specificity:	AA 704-733, C-Term
Reactivity:	Human, Mouse
Host:	Rabbit
Clonality:	Polyclonal
Conjugate:	This TMEM132E antibody is un-conjugated
Application:	Western Blotting (WB), Flow Cytometry (FACS)

Product Details

Immunogen:	This TMEM132E antibody is generated from rabbits immunized with a KLH conjugated synthetic peptide between 704-733 amino acids from the C-terminal region of human TMEM132E.
Clone:	RB29313
Isotype:	Ig Fraction
Purification:	This antibody is purified through a protein A column, followed by peptide affinity purification.

Target Details

Target:	TMEM132E
Alternative Name:	TMEM132E (TMEM132E Products)

Target Details

Molecular Weight:	116150
Gene ID:	124842
NCBI Accession:	NP_997196
UniProt:	Q6IEE7

Application Details

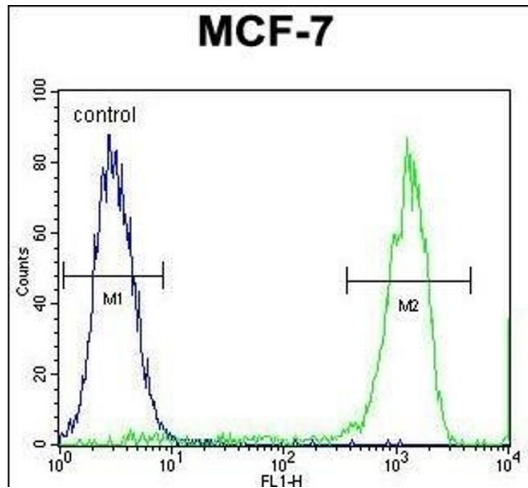
Application Notes:	WB: 1:1000. WB: 1:1000. FC: 1:10~50
Restrictions:	For Research Use only

Handling

Format:	Liquid
Buffer:	Purified polyclonal antibody supplied in PBS with 0.09 % (W/V) sodium azide.
Preservative:	Sodium azide
Precaution of Use:	This product contains Sodium azide: a POISONOUS AND HAZARDOUS SUBSTANCE which should be handled by trained staff only.
Storage:	4 °C,-20 °C
Storage Comment:	Maintain refrigerated at 2-8 °C for up to 6 months. For long term storage store at -20 °C in small aliquots to prevent freeze-thaw cycles.
Expiry Date:	6 months

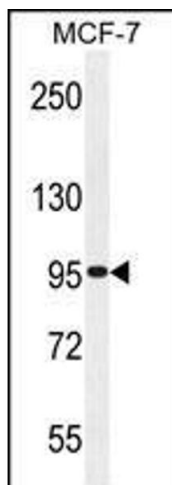
Publications

Product cited in:	Yao, Li, Liang, Lu, Zhu, Liu, Zhang, Yuan, Wang: "Methylprednisolone suppresses the Wnt signaling pathway in chronic lymphocytic leukemia cell line MEC-1 regulated by LEF-1 expression." in: International journal of clinical and experimental pathology , Vol. 8, Issue 7, pp. 7921-8, (2015) (PubMed).
-------------------	---



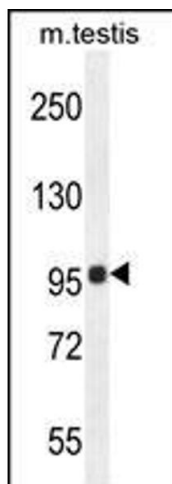
Flow Cytometry

Image 1. TMEM132E Antibody (C-term) (ABIN655434 and ABIN2844969) flow cytometric analysis of MCF-7 cells (right histogram) compared to a negative control cell (left histogram). FITC-conjugated goat-anti-rabbit secondary antibodies were used for the analysis.



Western Blotting

Image 2. TMEM132E Antibody (C-term) (ABIN655434 and ABIN2844969) western blot analysis in MCF-7 cell line lysates (35 µg/lane). This demonstrates the TMEM132E antibody detected the TMEM132E protein (arrow).



Western Blotting

Image 3. TMEM132E Antibody (C-term) (ABIN655434 and ABIN2844969) western blot analysis in mouse testis tissue lysates (35 µg/lane). This demonstrates the TMEM132E antibody detected the TMEM132E protein (arrow).