



[Go to Product page](#)

Datasheet for ABIN655439

anti-FOXI3 antibody (AA 157-186)

2 Images

Overview

Quantity:	400 µL
Target:	FOXI3
Binding Specificity:	AA 157-186
Reactivity:	Human
Host:	Rabbit
Clonality:	Polyclonal
Conjugate:	This FOXI3 antibody is un-conjugated
Application:	Western Blotting (WB), Flow Cytometry (FACS)

Product Details

Immunogen:	This FOXI3 antibody is generated from rabbits immunized with a KLH conjugated synthetic peptide between 157-186 amino acids from the Central region of human FOXI3.
Clone:	RB29328
Isotype:	Ig Fraction
Purification:	This antibody is purified through a protein A column, followed by peptide affinity purification.

Target Details

Target:	FOXI3
Alternative Name:	FOXI3 (FOXI3 Products)
Background:	Possible transcriptional factor (By similarity).

Target Details

Gene ID: 344167

NCBI Accession: [NP_001129121](#)

UniProt: [A8MTJ6](#)

Application Details

Application Notes: WB: 1:1000. FC: 1:10~50

Restrictions: For Research Use only

Handling

Format: Liquid

Buffer: Purified polyclonal antibody supplied in PBS with 0.09 % (W/V) sodium azide.

Preservative: Sodium azide

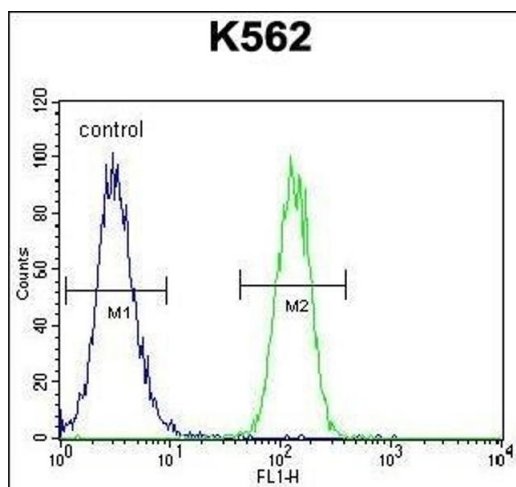
Precaution of Use: This product contains Sodium azide: a POISONOUS AND HAZARDOUS SUBSTANCE which should be handled by trained staff only.

Storage: 4 °C, -20 °C

Storage Comment: Maintain refrigerated at 2-8 °C for up to 6 months. For long term storage store at -20 °C in small aliquots to prevent freeze-thaw cycles.

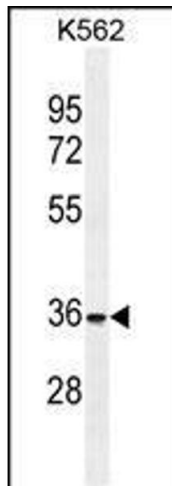
Expiry Date: 6 months

Images



Flow Cytometry

Image 1. FOXI3 Antibody (Center) (ABIN655439 and ABIN2844973) flow cytometric analysis of K562 cells (right histogram) compared to a negative control cell (left histogram). FITC-conjugated goat-anti-rabbit secondary antibodies were used for the analysis.



Western Blotting

Image 2. FOXI3 Antibody (Center) (ABIN655439 and ABIN2844973) western blot analysis in K562 cell line lysates (35 µg/lane). This demonstrates the FOXI3 antibody detected the FOXI3 protein (arrow).