



[Go to Product page](#)

Datasheet for ABIN655445
anti-PRR16 antibody (C-Term)

2 Images

Overview

Quantity:	400 µL
Target:	PRR16
Binding Specificity:	AA 182-210, C-Term
Reactivity:	Human
Host:	Rabbit
Clonality:	Polyclonal
Conjugate:	This PRR16 antibody is un-conjugated
Application:	Western Blotting (WB), Immunohistochemistry (Paraffin-embedded Sections) (IHC (p))

Product Details

Immunogen:	This PRR16 antibody is generated from rabbits immunized with a KLH conjugated synthetic peptide between 182-210 amino acids from the C-terminal region of human PRR16.
Clone:	RB29340
Isotype:	Ig Fraction
Predicted Reactivity:	M
Purification:	This antibody is purified through a protein A column, followed by peptide affinity purification.

Target Details

Target:	PRR16
Alternative Name:	PRR16 (PRR16 Products)

Target Details

Molecular Weight:	32812
Gene ID:	51334
NCBI Accession:	NP_057728
UniProt:	Q569H4

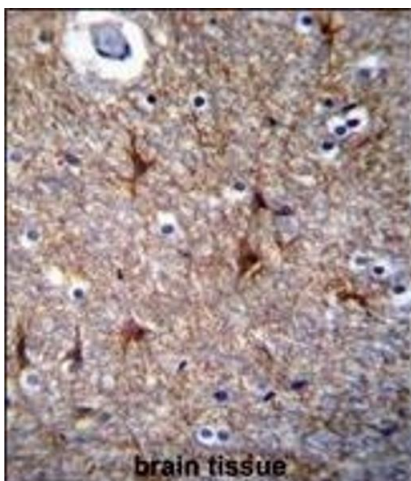
Application Details

Application Notes:	WB: 1:1000. IHC-P: 1:10~50
Restrictions:	For Research Use only

Handling

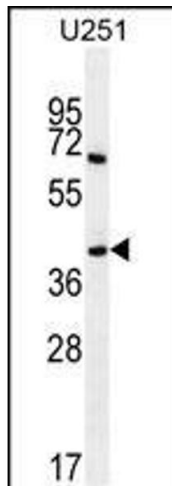
Format:	Liquid
Buffer:	Purified polyclonal antibody supplied in PBS with 0.09 % (W/V) sodium azide.
Preservative:	Sodium azide
Precaution of Use:	This product contains Sodium azide: a POISONOUS AND HAZARDOUS SUBSTANCE which should be handled by trained staff only.
Storage:	4 °C,-20 °C
Storage Comment:	Maintain refrigerated at 2-8 °C for up to 6 months. For long term storage store at -20 °C in small aliquots to prevent freeze-thaw cycles.
Expiry Date:	6 months

Images



Immunohistochemistry (Paraffin-embedded Sections)

Image 1. PRR16 Antibody (C-term) (ABIN655445 and ABIN2844975) immunohistochemistry analysis in formalin fixed and paraffin embedded human brain tissue followed by peroxidase conjugation of the secondary antibody and DAB staining. This data demonstrates the use of PRR16 Antibody (C-term) for immunohistochemistry. Clinical relevance has not been evaluated.



Western Blotting

Image 2. PRR16 Antibody (C-term) (ABIN655445 and ABIN2844975) western blot analysis in cell line lysates (35 μ g/lane). This demonstrates the PRR16 antibody detected the PRR16 protein (arrow).