

Datasheet for ABIN655466
anti-KCTD2 antibody (C-Term)



[Go to Product page](#)

1 Image

Overview

Quantity:	400 µL
Target:	KCTD2
Binding Specificity:	AA 234-262, C-Term
Reactivity:	Human
Host:	Rabbit
Clonality:	Polyclonal
Conjugate:	This KCTD2 antibody is un-conjugated
Application:	Western Blotting (WB)

Product Details

Immunogen:	This KCTD2 antibody is generated from rabbits immunized with a KLH conjugated synthetic peptide between 234-262 amino acids from the C-terminal region of human KCTD2.
Clone:	RB29531
Isotype:	Ig Fraction
Predicted Reactivity:	B, M, Rat
Purification:	This antibody is purified through a protein A column, followed by peptide affinity purification.

Target Details

Target:	KCTD2
Alternative Name:	KCTD2 (KCTD2 Products)

Target Details

Molecular Weight:	28527
Gene ID:	23510
NCBI Accession:	NP_056168
UniProt:	Q14681

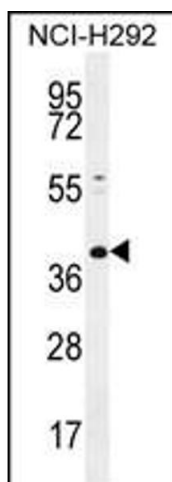
Application Details

Application Notes:	WB: 1:1000
Restrictions:	For Research Use only

Handling

Format:	Liquid
Buffer:	Purified polyclonal antibody supplied in PBS with 0.09 % (W/V) sodium azide.
Preservative:	Sodium azide
Precaution of Use:	This product contains Sodium azide: a POISONOUS AND HAZARDOUS SUBSTANCE which should be handled by trained staff only.
Storage:	4 °C,-20 °C
Storage Comment:	Maintain refrigerated at 2-8 °C for up to 6 months. For long term storage store at -20 °C in small aliquots to prevent freeze-thaw cycles.
Expiry Date:	6 months

Images



Western Blotting

Image 1. KCTD2 Antibody (C-term) (ABIN655466 and ABIN2844993) western blot analysis in NCI- cell line lysates (35 µg/lane). This demonstrates the KCTD2 antibody detected the KCTD2 protein (arrow).