



Datasheet for ABIN655477
anti-DTWD1 antibody (AA 144-173)



[Go to Product page](#)

1 Image

Overview

Quantity:	400 µL
Target:	DTWD1
Binding Specificity:	AA 144-173
Reactivity:	Human
Host:	Rabbit
Clonality:	Polyclonal
Conjugate:	This DTWD1 antibody is un-conjugated
Application:	Western Blotting (WB)

Product Details

Immunogen:	This DTWD1 antibody is generated from rabbits immunized with a KLH conjugated synthetic peptide between 144-173 amino acids from the Central region of human DTWD1.
Clone:	RB29631
Isotype:	Ig Fraction
Purification:	This antibody is purified through a protein A column, followed by peptide affinity purification.

Target Details

Target:	DTWD1
Alternative Name:	DTWD1 (DTWD1 Products)
Molecular Weight:	35248

Target Details

Gene ID:	56986
NCBI Accession:	NP_001138427 , NP_064619
UniProt:	Q8N5C7

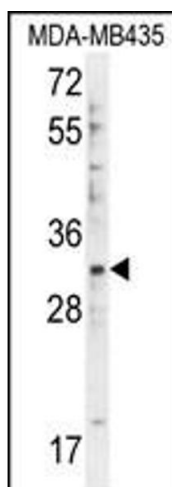
Application Details

Application Notes:	WB: 1:1000
Restrictions:	For Research Use only

Handling

Format:	Liquid
Buffer:	Purified polyclonal antibody supplied in PBS with 0.09 % (W/V) sodium azide.
Preservative:	Sodium azide
Precaution of Use:	This product contains Sodium azide: a POISONOUS AND HAZARDOUS SUBSTANCE which should be handled by trained staff only.
Storage:	4 °C, -20 °C
Storage Comment:	Maintain refrigerated at 2-8 °C for up to 6 months. For long term storage store at -20 °C in small aliquots to prevent freeze-thaw cycles.
Expiry Date:	6 months

Images



Western Blotting

Image 1. DTWD1 Antibody (Center) (ABIN655477 and ABIN2845000) western blot analysis in MDA-M cell line lysates (35 µg/lane). This demonstrates the DTWD1 antibody detected the DTWD1 protein (arrow).