

Datasheet for ABIN655501
**anti-Nth Endonuclease III-Like 1 (NTHL1) (AA 88-117)
antibody**



[Go to Product page](#)

2 Images

Overview

| | |
|----------------------|-------------------------------------|
| Quantity: | 400 µL |
| Target: | Nth Endonuclease III-Like 1 (NTHL1) |
| Binding Specificity: | AA 88-117 |
| Reactivity: | Human |
| Host: | Rabbit |
| Clonality: | Polyclonal |
| Conjugate: | Un-conjugated |
| Application: | Western Blotting (WB) |

Product Details

| | |
|---------------|--|
| Immunogen: | This NTHL1 antibody is generated from rabbits immunized with a KLH conjugated synthetic peptide between 88-117 amino acids from the Central region of human NTHL1. |
| Clone: | RB17473 |
| Isotype: | Ig Fraction |
| Purification: | This antibody is purified through a protein A column, followed by peptide affinity purification. |

Target Details

| | |
|-------------------|--|
| Target: | Nth Endonuclease III-Like 1 (NTHL1) |
| Alternative Name: | NTHL1 (NTHL1 Products) |
| Background: | The protein encoded by this gene is a DNA N-glycosylase of the endonuclease III family. Like a |

Target Details

similar protein in E. coli, the encoded protein has DNA glycosylase activity on DNA substrates containing oxidized pyrimidine residues and has apurinic/apyrimidinic lyase activity.

Molecular Weight: 34390

Gene ID: 4913

NCBI Accession: [NP_002519](#)

UniProt: [P78549](#)

Application Details

Application Notes: WB: 1:1000. WB: 1:1000

Restrictions: For Research Use only

Handling

Format: Liquid

Buffer: Purified polyclonal antibody supplied in PBS with 0.09 % (W/V) sodium azide.

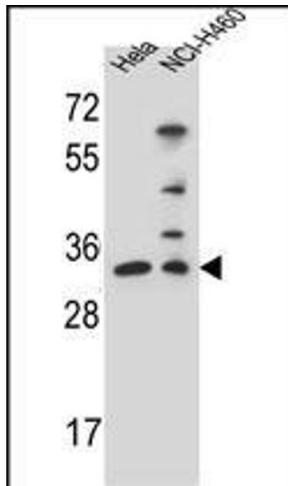
Preservative: Sodium azide

Precaution of Use: This product contains Sodium azide: a POISONOUS AND HAZARDOUS SUBSTANCE which should be handled by trained staff only.

Storage: 4 °C,-20 °C

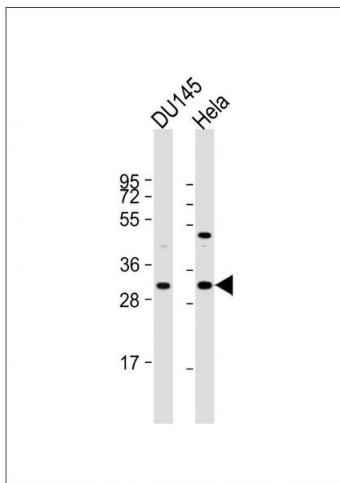
Storage Comment: Maintain refrigerated at 2-8 °C for up to 6 months. For long term storage store at -20 °C in small aliquots to prevent freeze-thaw cycles.

Expiry Date: 6 months



Western Blotting

Image 1. NTHL1 Antibody (Center) (ABIN655501 and ABIN2845017) western blot analysis in HeLa,NCI- cell line lysates (35 µg/lane).This demonstrates the NTHL1 antibody detected the NTHL1 protein (arrow).



Western Blotting

Image 2. All lanes : Anti-NTHL1 Antibody (Center) at 1:1000 dilution Lane 1: D whole cell lysate Lane 2: HeLa whole cell lysate Lysates/proteins at 20 µg per lane. Secondary Goat Anti-Rabbit IgG, (H+L), Peroxidase conjugated at 1/10000 dilution. Predicted band size : 34 kDa Blocking/Dilution buffer: 5 % NFDM/TBST.