

Datasheet for ABIN655506
anti-MITF antibody (N-Term)[Go to Product page](#)

5 Images

1 Publication

Overview

Quantity:	400 µL
Target:	MITF
Binding Specificity:	AA 1-28, N-Term
Reactivity:	Human
Host:	Rabbit
Clonality:	Polyclonal
Conjugate:	This MITF antibody is un-conjugated
Application:	Western Blotting (WB), Immunofluorescence (IF), Flow Cytometry (FACS)

Product Details

Immunogen:	This MITF antibody is generated from rabbits immunized with a KLH conjugated synthetic peptide between 1-28 amino acids from the N-terminal region of human MITF.
Clone:	RB18810
Isotype:	Ig Fraction
Predicted Reactivity:	M, Rat
Purification:	This antibody is purified through a protein A column, followed by peptide affinity purification.

Target Details

Target:	MITF
Alternative Name:	MITF (MITF Products)

Target Details

Background:	This gene encodes a transcription factor that contains both basic helix-loop-helix and leucine zipper structural features. It regulates the differentiation and development of melanocytes retinal pigment epithelium and is also responsible for pigment cell-specific transcription of the melanogenesis enzyme genes. Heterozygous mutations in the this gene cause auditory-pigmentary syndromes, such as Waardenburg syndrome type 2 and Tietz syndrome. Alternatively spliced transcript variants encoding different isoforms have been identified.
Molecular Weight:	58795
Gene ID:	4286
NCBI Accession:	NP_000239 , NP_001171896 , NP_006713 , NP_937801 , NP_937802 , NP_937820 , NP_937821
UniProt:	O75030
Pathways:	Chromatin Binding

Application Details

Application Notes:	IF: 1:10~50. WB: 1:1000. WB: 1:2000. IHC: 1:800. FC: 1:10~50
Restrictions:	For Research Use only

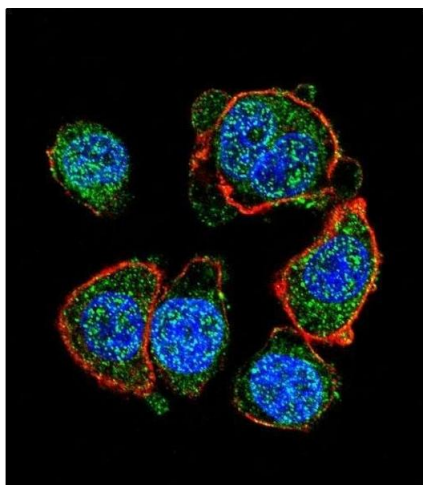
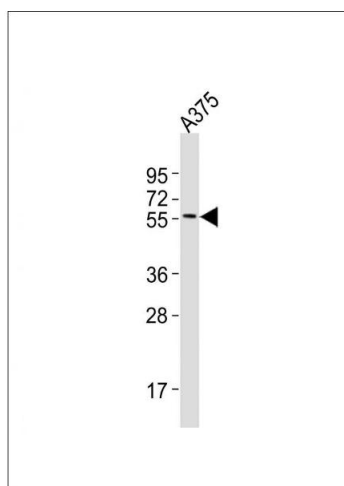
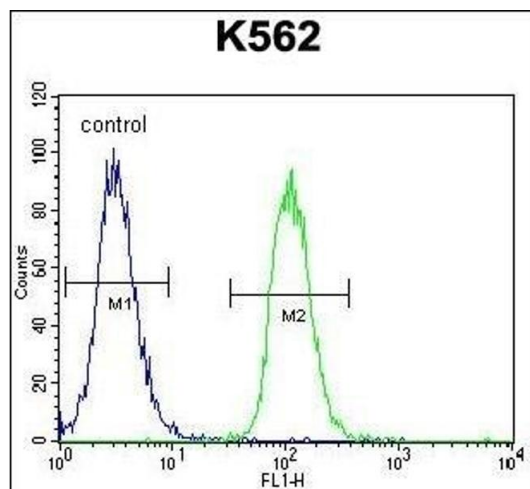
Handling

Format:	Liquid
Buffer:	Purified polyclonal antibody supplied in PBS with 0.09 % (W/V) sodium azide.
Preservative:	Sodium azide
Precaution of Use:	This product contains Sodium azide: a POISONOUS AND HAZARDOUS SUBSTANCE which should be handled by trained staff only.
Storage:	4 °C,-20 °C
Storage Comment:	Maintain refrigerated at 2-8 °C for up to 6 months. For long term storage store at -20 °C in small aliquots to prevent freeze-thaw cycles.
Expiry Date:	6 months

Publications

Product cited in:	Wang, Wu, Zhou, Guo, Zheng, Wang, Bi, Liu, Zhou, Guo, Sha: "Mapping of the N-linked glycoproteome of human spermatozoa." in: Journal of proteome research , Vol. 12, Issue 12,
-------------------	---

Images



Flow Cytometry

Image 1. MITF Antibody (N-term) (ABIN655506 and ABIN2845022) flow cytometric analysis of K562 cells (right histogram) compared to a negative control cell (left histogram). FITC-conjugated goat-anti-rabbit secondary antibodies were used for the analysis.

Western Blotting

Image 2. Anti-MITF Antibody (N-term) at 1:2000 dilution + whole cell lysates Lysates/proteins at 20 µg per lane. Secondary Goat Anti-Rabbit IgG, (H+L), Peroxidase conjugated at 1/10000 dilution Predicted band size : 59 kDa Blocking/Dilution buffer: 5 % NFDM/TBST.

Immunofluorescence

Image 3. Confocal immunofluorescent analysis of MITF Antibody (N-term) (ABIN655506 and ABIN2845022) with hela cell followed by Alexa Fluor 488-conjugated goat anti-rabbit IgG (green). Actin filaments have been labeled with Alexa Fluor 555 phalloidin (red). DAPI was used to stain the cell nuclear (blue).

Please check the [product details page](#) for more images. Overall 5 images are available for ABIN655506.