



[Go to Product page](#)

Datasheet for ABIN655507

anti-Myeloperoxidase antibody (N-Term)

2 Images

Overview

Quantity:	400 µL
Target:	Myeloperoxidase (MPO)
Binding Specificity:	AA 60-89, N-Term
Reactivity:	Human
Host:	Rabbit
Clonality:	Polyclonal
Conjugate:	This Myeloperoxidase antibody is un-conjugated
Application:	Western Blotting (WB), Flow Cytometry (FACS)

Product Details

Immunogen:	This Myeloperoxidase antibody is generated from rabbits immunized with a KLH conjugated synthetic peptide between 60-89 amino acids from the N-terminal region of human Myeloperoxidase.
Clone:	RB18814
Isotype:	Ig Fraction
Purification:	This antibody is purified through a protein A column, followed by peptide affinity purification.

Target Details

Target:	Myeloperoxidase (MPO)
Alternative Name:	Myeloperoxidase (MPO Products)

Target Details

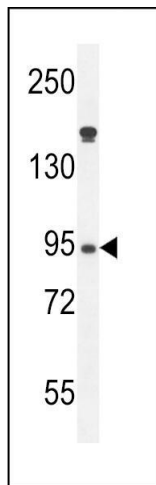
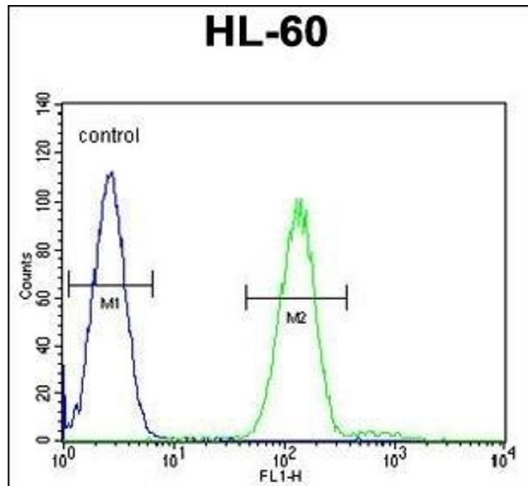
Background:	Myeloperoxidase (MPO) is a heme protein synthesized during myeloid differentiation that constitutes the major component of neutrophil azurophilic granules. Produced as a single chain precursor, myeloperoxidase is subsequently cleaved into a light and heavy chain. The mature myeloperoxidase is a tetramer composed of 2 light chains and 2 heavy chains. This enzyme produces hypohalous acids central to the microbicidal activity of neutrophils. [provided by RefSeq].
Molecular Weight:	83869
Gene ID:	4353
NCBI Accession:	NP_000241
UniProt:	P05164
Pathways:	Chromatin Binding

Application Details

Application Notes:	WB: 1:1000. FC: 1:10~50
Restrictions:	For Research Use only

Handling

Format:	Liquid
Buffer:	Purified polyclonal antibody supplied in PBS with 0.09 % (W/V) sodium azide.
Preservative:	Sodium azide
Precaution of Use:	This product contains Sodium azide: a POISONOUS AND HAZARDOUS SUBSTANCE which should be handled by trained staff only.
Storage:	4 °C,-20 °C
Storage Comment:	Maintain refrigerated at 2-8 °C for up to 6 months. For long term storage store at -20 °C in small aliquots to prevent freeze-thaw cycles.
Expiry Date:	6 months



Flow Cytometry

Image 1. Myeloperoxidase Antibody (N-term) (ABIN655507 and ABIN2845023) flow cytometric analysis of HL-60 cells (right histogram) compared to a negative control cell (left histogram). FITC-conjugated goat-anti-rabbit secondary antibodies were used for the analysis.

Western Blotting

Image 2. Myeloperoxidase Antibody (N-term) (ABIN655507 and ABIN2845023) western blot analysis in HL-60 cell line lysates (35 µg/lane). This demonstrates the Myeloperoxidase antibody detected the Myeloperoxidase protein (arrow).