

Datasheet for ABIN655516
anti-GUCY2D antibody (AA 540-570)[Go to Product page](#)

4 Images

Overview

Quantity:	400 µL
Target:	GUCY2D
Binding Specificity:	AA 540-570
Reactivity:	Human, Rat
Host:	Rabbit
Clonality:	Polyclonal
Conjugate:	This GUCY2D antibody is un-conjugated
Application:	Western Blotting (WB), Flow Cytometry (FACS), Immunohistochemistry (Paraffin-embedded Sections) (IHC (p))

Product Details

Immunogen:	This GUCY2D antibody is generated from rabbits immunized with a KLH conjugated synthetic peptide between 540-570 amino acids from the Central region of human GUCY2D.
Clone:	RB19346
Isotype:	Ig Fraction
Purification:	This antibody is purified through a protein A column, followed by peptide affinity purification.

Target Details

Target:	GUCY2D
Alternative Name:	GUCY2D (GUCY2D Products)

Target Details

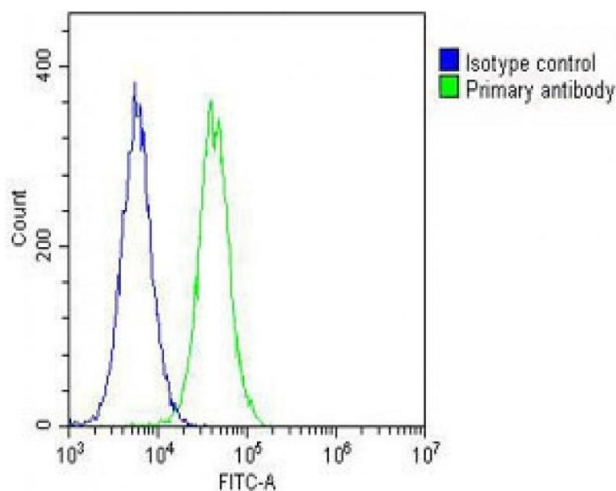
Background:	This gene encodes a retina-specific guanylate cyclase, which is a member of the membrane guanylyl cyclase family. Like other membrane guanylyl cyclases, this enzyme has a hydrophobic amino-terminal signal sequence followed by a large extracellular domain, a single membrane spanning domain, a kinase homology domain, and a guanylyl cyclase catalytic domain. In contrast to other membrane guanylyl cyclases, this enzyme is not activated by natriuretic peptides. Mutations in this gene result in Leber congenital amaurosis and cone-rod dystrophy-6 diseases. [provided by RefSeq].
Molecular Weight:	120059
Gene ID:	3000
NCBI Accession:	NP_000171
UniProt:	Q02846
Pathways:	Regulation of G-Protein Coupled Receptor Protein Signaling , Phototransduction

Application Details

Application Notes:	WB: 1:1000. WB: 1:2000. IHC-P: 1:50~100. FC: 1:25
Restrictions:	For Research Use only

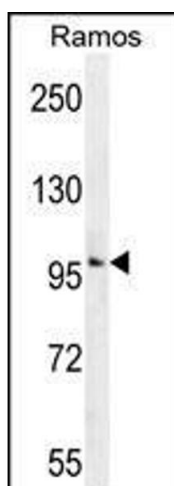
Handling

Format:	Liquid
Buffer:	Purified polyclonal antibody supplied in PBS with 0.09 % (W/V) sodium azide.
Preservative:	Sodium azide
Precaution of Use:	This product contains Sodium azide: a POISONOUS AND HAZARDOUS SUBSTANCE which should be handled by trained staff only.
Storage:	4 °C,-20 °C
Storage Comment:	Maintain refrigerated at 2-8 °C for up to 6 months. For long term storage store at -20 °C in small aliquots to prevent freeze-thaw cycles.
Expiry Date:	6 months



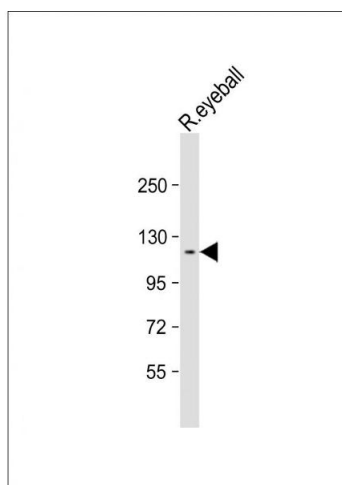
Flow Cytometry

Image 1. Overlay histogram showing HeLa cells stained with (ABIN655516 and ABIN2845031) (green line). The cells were fixed with 2 % paraformaldehyde (10 min). The cells were then incubated in 2 % bovine serum albumin to block non-specific protein-protein interactions followed by the antibody ((ABIN655516 and ABIN2845031), 1:25 dilution) for 60 min at 37 °C. The secondary antibody used was Goat-Anti-Rabbit IgG, DyLight® 488 Conjugated Highly Cross-Adsorbed(OH191631) at 1/200 dilution for 40 min at 37 °C. Isotype control antibody (blue line) was rabbit IgG (1 μ g/ 1×10^6 cells) used under the same conditions. Acquisition of >10,000 events was performed.



Western Blotting

Image 2. GUCY2D Antibody (Center) (ABIN655516 and ABIN2845031) western blot analysis in Ramos cell line lysates (35 μ g/lane). This demonstrates the GUCY2D antibody detected the GUCY2D protein (arrow).



Western Blotting

Image 3. Anti-GUCY2D Antibody (Center) at 1:2000 dilution + rat eyeball lysate Lysates/proteins at 20 μ g per lane. Secondary Goat Anti-Rabbit IgG, (H+L), Peroxidase conjugated at 1/10000 dilution. Predicted band size : 120 kDa Blocking/Dilution buffer: 5 % NFDM/TBST.

Please check the [product details page](#) for more images. Overall 4 images are available for ABIN655516.