



[Go to Product page](#)

Datasheet for ABIN655517

anti-MSH2 antibody (AA 637-665)

3 Images

Overview

Quantity:	400 µL
Target:	MSH2
Binding Specificity:	AA 637-665
Reactivity:	Human
Host:	Rabbit
Clonality:	Polyclonal
Conjugate:	This MSH2 antibody is un-conjugated
Application:	Western Blotting (WB), Immunofluorescence (IF), Flow Cytometry (FACS)

Product Details

Immunogen:	This MSH2 antibody is generated from rabbits immunized with a KLH conjugated synthetic peptide between 637-665 amino acids from the Central region of human MSH2.
Clone:	RB19390
Isotype:	Ig Fraction
Purification:	This antibody is purified through a protein A column, followed by peptide affinity purification.

Target Details

Target:	MSH2
Alternative Name:	MSH2 (MSH2 Products)
Background:	MSH2 was identified as a locus frequently mutated in hereditary nonpolyposis colon cancer

Target Details

(HNPCC). When cloned, it was discovered to be a human homolog of the E. coli mismatch repair gene mutS, consistent with the characteristic alterations in microsatellite sequences (RER+ phenotype) found in HNPCC. [provided by RefSeq].

Molecular Weight: 104743

Gene ID: 4436

NCBI Accession: [NP_000242](#), [NP_001245210](#)

UniProt: [P43246](#)

Pathways: [DNA Damage Repair](#), [Production of Molecular Mediator of Immune Response](#)

Application Details

Application Notes: IF: 1:10~50. WB: 1:1000. FC: 1:10~50

Restrictions: For Research Use only

Handling

Format: Liquid

Buffer: Purified polyclonal antibody supplied in PBS with 0.09 % (W/V) sodium azide.

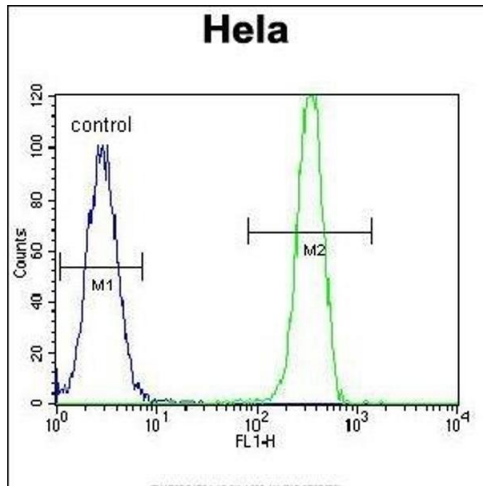
Preservative: Sodium azide

Precaution of Use: This product contains Sodium azide: a POISONOUS AND HAZARDOUS SUBSTANCE which should be handled by trained staff only.

Storage: 4 °C,-20 °C

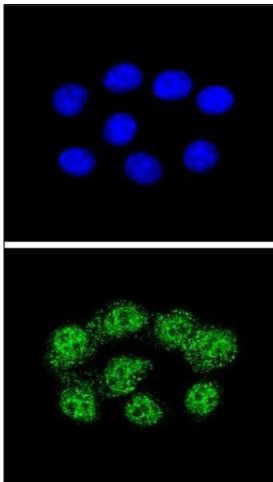
Storage Comment: Maintain refrigerated at 2-8 °C for up to 6 months. For long term storage store at -20 °C in small aliquots to prevent freeze-thaw cycles.

Expiry Date: 6 months



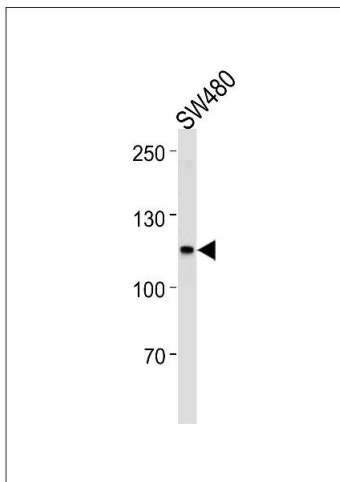
Flow Cytometry

Image 1. MSH2 Antibody (Center) (ABIN655517 and ABIN2845032) flow cytometric analysis of HeLa cells (right histogram) compared to a negative control cell (left histogram). FITC-conjugated goat-anti-rabbit secondary antibodies were used for the analysis.



Immunofluorescence

Image 2. Confocal immunofluorescent analysis of MSH2 Antibody (Center) (ABIN655517 and ABIN2845032) with HeLa cell followed by Alexa Fluor® 488-conjugated goat anti-rabbit IgG (green). DAPI was used to stain the cell nuclear (blue).



Western Blotting

Image 3. MSH2 Antibody (Center) (ABIN655517 and ABIN2845032) western blot analysis in S, cell line lysates (35 µg/lane). This demonstrates the MSH2 antibody detected the MSH2 protein (arrow).