

Datasheet for ABIN655521
anti-SFRP4 antibody (C-Term)[Go to Product page](#)

2 Images

Overview

Quantity:	400 µL
Target:	SFRP4
Binding Specificity:	AA 318-346, C-Term
Reactivity:	Human
Host:	Rabbit
Clonality:	Polyclonal
Conjugate:	This SFRP4 antibody is un-conjugated
Application:	Western Blotting (WB), Flow Cytometry (FACS)

Product Details

Immunogen:	This SFRP4 antibody is generated from rabbits immunized with a KLH conjugated synthetic peptide between 318-346 amino acids from the C-terminal region of human SFRP4.
Clone:	RB19849
Isotype:	Ig Fraction
Purification:	This antibody is purified through a protein A column, followed by peptide affinity purification.

Target Details

Target:	SFRP4
Alternative Name:	SFRP4 (SFRP4 Products)
Background:	Secreted frizzled-related protein 4 (SFRP4) is a member of the SFRP family that contains a

Target Details

cysteine-rich domain homologous to the putative Wnt-binding site of Frizzled proteins. SFRPs act as soluble modulators of Wnt signaling. The expression of SFRP4 in ventricular myocardium correlates with apoptosis related gene expression.

Molecular Weight: 39827

Gene ID: 6424

NCBI Accession: [NP_003005](#)

UniProt: [Q6FHJ7](#)

Pathways: [WNT Signaling](#)

Application Details

Application Notes: WB: 1:1000. FC: 1:10~50

Restrictions: For Research Use only

Handling

Format: Liquid

Buffer: Purified polyclonal antibody supplied in PBS with 0.09 % (W/V) sodium azide.

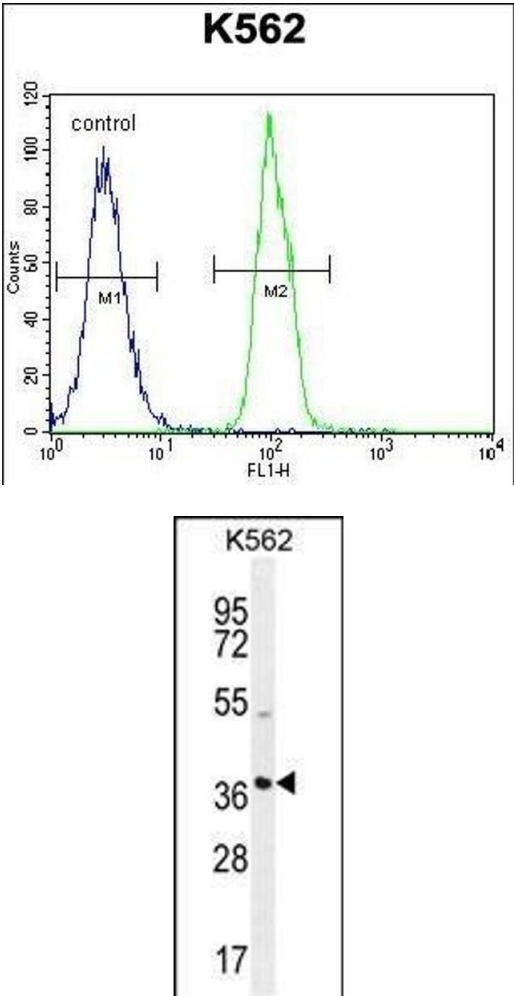
Preservative: Sodium azide

Precaution of Use: This product contains Sodium azide: a POISONOUS AND HAZARDOUS SUBSTANCE which should be handled by trained staff only.

Storage: 4 °C,-20 °C

Storage Comment: Maintain refrigerated at 2-8 °C for up to 6 months. For long term storage store at -20 °C in small aliquots to prevent freeze-thaw cycles.

Expiry Date: 6 months



Flow Cytometry

Image 1. SFRP4 Antibody (C-term) (ABIN655521 and ABIN2845035) flow cytometric analysis of K562 cells (right histogram) compared to a negative control cell (left histogram).FITC-conjugated goat-anti-rabbit secondary antibodies were used for the analysis.

Western Blotting

Image 2. SFRP4 Antibody (C-term) (ABIN655521 and ABIN2845035) western blot analysis in K562 cell line lysates (35 µg/lane).This demonstrates the SFRP4 antibody detected the SFRP4 protein (arrow).