



Datasheet for ABIN655526
anti-FOXC2 antibody (AA 183-210)



[Go to Product page](#)

2 Images

Overview

Quantity:	400 µL
Target:	FOXC2
Binding Specificity:	AA 183-210
Reactivity:	Human
Host:	Rabbit
Clonality:	Polyclonal
Conjugate:	This FOXC2 antibody is un-conjugated
Application:	Western Blotting (WB), Flow Cytometry (FACS)

Product Details

Immunogen:	This FOXC2 antibody is generated from rabbits immunized with a KLH conjugated synthetic peptide between 183-210 amino acids from the Central region of human FOXC2.
Clone:	RB20053
Isotype:	Ig Fraction
Purification:	This antibody is purified through a protein A column, followed by peptide affinity purification.

Target Details

Target:	FOXC2
Alternative Name:	FOXC2 (FOXC2 Products)
Background:	This gene belongs to the forkhead family of transcription factors which is characterized by a

Target Details

distinct DNA-binding forkhead domain. The specific function of this gene has not yet been determined, however, it may play a role in the development of mesenchymal tissues.

Molecular Weight: 53719

Gene ID: 2303

NCBI Accession: [NP_005242](#)

UniProt: [Q99958](#)

Application Details

Application Notes: WB: 1:1000. FC: 1:10~50

Restrictions: For Research Use only

Handling

Format: Liquid

Buffer: Purified polyclonal antibody supplied in PBS with 0.09 % (W/V) sodium azide.

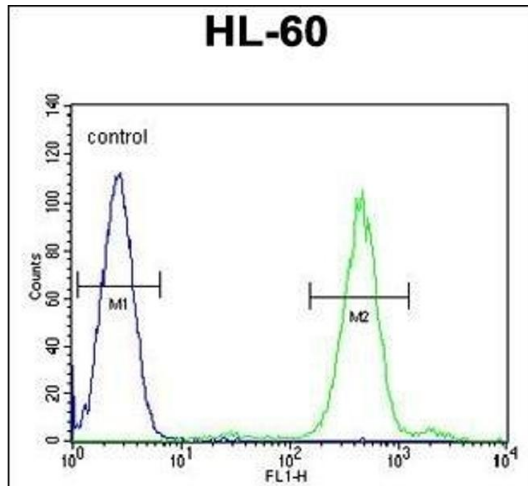
Preservative: Sodium azide

Precaution of Use: This product contains Sodium azide: a POISONOUS AND HAZARDOUS SUBSTANCE which should be handled by trained staff only.

Storage: 4 °C,-20 °C

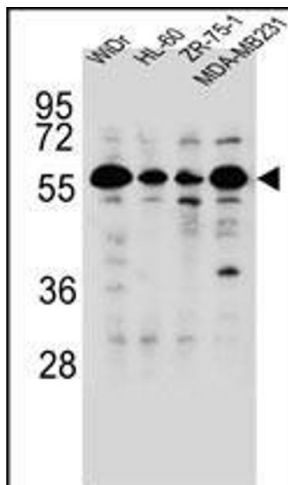
Storage Comment: Maintain refrigerated at 2-8 °C for up to 6 months. For long term storage store at -20 °C in small aliquots to prevent freeze-thaw cycles.

Expiry Date: 6 months



Flow Cytometry

Image 1. FOXC2 Antibody (Center) (ABIN655526 and ABIN2845039) flow cytometric analysis of HL-60 cells (right histogram) compared to a negative control cell (left histogram).FITC-conjugated goat-anti-rabbit secondary antibodies were used for the analysis.



Western Blotting

Image 2. FOXC2 Antibody (Center) (ABIN655526 and ABIN2845039) western blot analysis in WiDr,HL-60,ZR-75-1,MDA-M cell line lysates (35 µg/lane).This demonstrates the FOXC2 antibody detected the FOXC2 protein (arrow).