



[Go to Product page](#)

Datasheet for ABIN655528

anti-SMYD4 antibody (C-Term)

3 Images

Overview

Quantity:	400 µL
Target:	SMYD4
Binding Specificity:	AA 541-568, C-Term
Reactivity:	Human
Host:	Rabbit
Clonality:	Polyclonal
Conjugate:	This SMYD4 antibody is un-conjugated
Application:	Western Blotting (WB), Flow Cytometry (FACS), Immunohistochemistry (Paraffin-embedded Sections) (IHC (p))

Product Details

Immunogen:	This SMYD4 antibody is generated from rabbits immunized with a KLH conjugated synthetic peptide between 541-568 amino acids from the C-terminal region of human SMYD4.
Clone:	RB20550
Isotype:	Ig Fraction
Purification:	This antibody is purified through a protein A column, followed by peptide affinity purification.

Target Details

Target:	SMYD4
Alternative Name:	SMYD4 (SMYD4 Products)

Target Details

Background: The specific function of the protein remains unknown.

Molecular Weight: 89225

Gene ID: 114826

NCBI Accession: [NP_443160](#)

UniProt: [Q8IYR2](#)

Application Details

Application Notes: WB: 1:1000. IHC-P: 1:50~100. FC: 1:10~50

Restrictions: For Research Use only

Handling

Format: Liquid

Buffer: Purified polyclonal antibody supplied in PBS with 0.09 % (W/V) sodium azide.

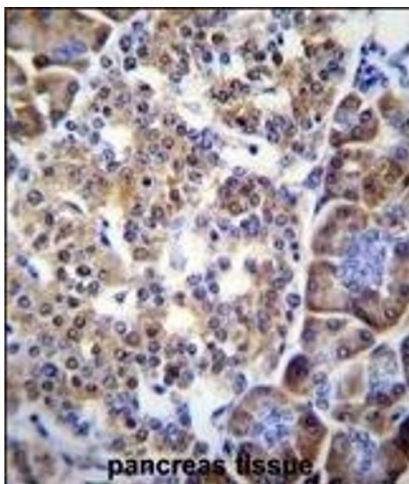
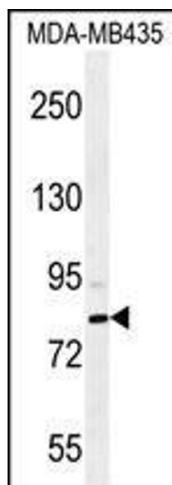
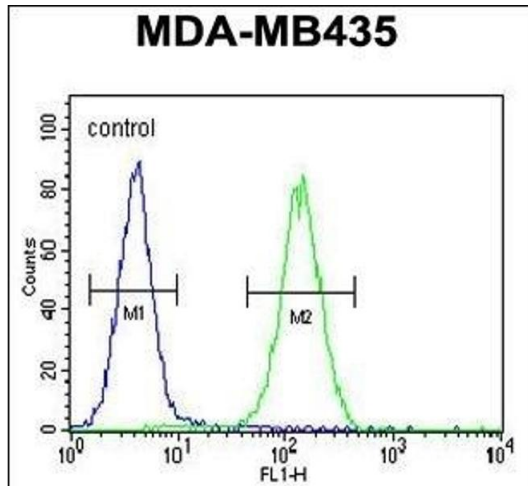
Preservative: Sodium azide

Precaution of Use: This product contains Sodium azide: a POISONOUS AND HAZARDOUS SUBSTANCE which should be handled by trained staff only.

Storage: 4 °C, -20 °C

Storage Comment: Maintain refrigerated at 2-8 °C for up to 6 months. For long term storage store at -20 °C in small aliquots to prevent freeze-thaw cycles.

Expiry Date: 6 months



Flow Cytometry

Image 1. SMYD4 Antibody (C-term) (ABIN655528 and ABIN2845041) flow cytometric analysis of MDA-M cells (right histogram) compared to a negative control cell (left histogram). FITC-conjugated goat-anti-rabbit secondary antibodies were used for the analysis.

Western Blotting

Image 2. SMYD4 Antibody (C-term) (ABIN655528 and ABIN2845041) western blot analysis in MDA-M cell line lysates (35 µg/lane). This demonstrates the SMYD4 antibody detected the SMYD4 protein (arrow).

Immunohistochemistry (Paraffin-embedded Sections)

Image 3. SMYD4 Antibody (C-term) (ABIN655528 and ABIN2845041) immunohistochemistry analysis in formalin fixed and paraffin embedded human pancreas tissue followed by peroxidase conjugation of the secondary antibody and DAB staining. This data demonstrates the use of SMYD4 Antibody (C-term) for immunohistochemistry. Clinical relevance has not been evaluated.