



[Go to Product page](#)

Datasheet for ABIN655532  
**anti-CLEC12B antibody (C-Term)**

2 Images

Overview

Quantity:	400 µL
Target:	CLEC12B
Binding Specificity:	AA 249-276, C-Term
Reactivity:	Human
Host:	Rabbit
Clonality:	Polyclonal
Conjugate:	This CLEC12B antibody is un-conjugated
Application:	Western Blotting (WB), Immunohistochemistry (Paraffin-embedded Sections) (IHC (p))

Product Details

Immunogen:	This CLEC12B antibody is generated from rabbits immunized with a KLH conjugated synthetic peptide between 249-276 amino acids from the C-terminal region of human CLEC12B.
Clone:	RB29037
Isotype:	Ig Fraction
Purification:	This antibody is purified through a protein A column, followed by peptide affinity purification.

Target Details

Target:	CLEC12B
Alternative Name:	CLEC12B ( <a href="#">CLEC12B Products</a> )
Background:	Cell surface receptor that protects target cells against natural killer cell-mediated lysis.

## Target Details

---

Modulates signaling cascades and mediates tyrosine phosphorylation of target MAP kinases.

Molecular Weight: 31616

Gene ID: 387837

NCBI Accession: [NP\\_001123470](#), [NP\\_995324](#)

UniProt: [Q2HXU8](#)

## Application Details

---

Application Notes: WB: 1:1000-1:2000. IHC-P: 1:50~100

Restrictions: For Research Use only

## Handling

---

Format: Liquid

Buffer: Purified polyclonal antibody supplied in PBS with 0.09 % (W/V) sodium azide.

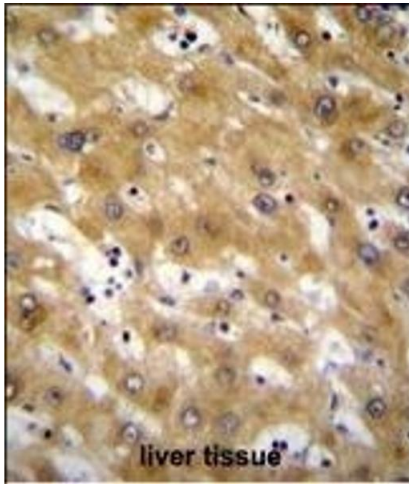
Preservative: Sodium azide

Precaution of Use: This product contains Sodium azide: a POISONOUS AND HAZARDOUS SUBSTANCE which should be handled by trained staff only.

Storage: 4 °C, -20 °C

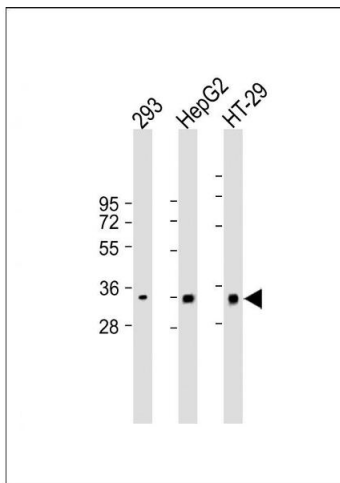
Storage Comment: Maintain refrigerated at 2-8 °C for up to 6 months. For long term storage store at -20 °C in small aliquots to prevent freeze-thaw cycles.

Expiry Date: 6 months



### Immunohistochemistry (Paraffin-embedded Sections)

**Image 1.** CLEC12B Antibody (C-term) (ABIN655532 and ABIN2845044) immunohistochemistry analysis in formalin fixed and paraffin embedded human liver tissue followed by peroxidase conjugation of the secondary antibody and DAB staining. This data demonstrates the use of CLEC12B Antibody (C-term) for immunohistochemistry. Clinical relevance has not been evaluated.



### Western Blotting

**Image 2.** All lanes : Anti-CLEC12B Antibody (C-term) at 1:1000-1:2000 dilution Lane 1: 293 whole cell lysate Lane 2: HepG2 whole cell lysate Lane 3: HT-29 whole cell lysate Lysates/proteins at 20 µg per lane. Secondary Goat Anti-Rabbit IgG, (H+L), Peroxidase conjugated at 1/10000 dilution. Predicted band size : 32 kDa Blocking/Dilution buffer: 5 % NFDm/TBST.