



[Go to Product page](#)

Datasheet for ABIN655540
anti-DDX60L antibody (C-Term)

2 Images

Overview

Quantity:	400 µL
Target:	DDX60L
Binding Specificity:	AA 1200-1228, C-Term
Reactivity:	Human
Host:	Rabbit
Clonality:	Polyclonal
Conjugate:	This DDX60L antibody is un-conjugated
Application:	Western Blotting (WB), Immunohistochemistry (Paraffin-embedded Sections) (IHC (p))

Product Details

Immunogen:	This DDX60L antibody is generated from rabbits immunized with a KLH conjugated synthetic peptide between 1200-1228 amino acids from the C-terminal region of human DDX60L.
Clone:	RB29122
Isotype:	Ig Fraction
Purification:	This antibody is purified through a protein A column, followed by peptide affinity purification.

Target Details

Target:	DDX60L
Alternative Name:	DDX60L (DDX60L Products)
Background:	The specific function of the protein remains unknown.

Target Details

Molecular Weight: 197674

Gene ID: 91351

NCBI Accession: [NP_001012985](#)

UniProt: [Q5H9U9](#)

Application Details

Application Notes: WB: 1:1000. IHC-P: 1:10~50

Restrictions: For Research Use only

Handling

Format: Liquid

Buffer: Purified polyclonal antibody supplied in PBS with 0.09 % (W/V) sodium azide.

Preservative: Sodium azide

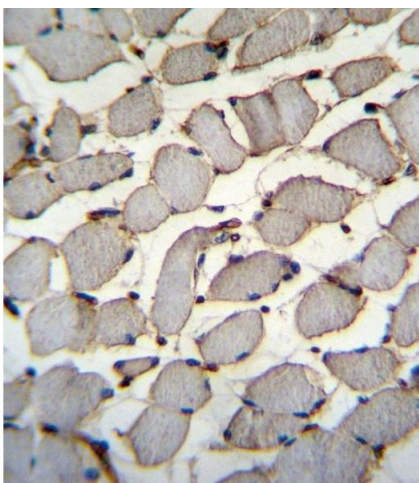
Precaution of Use: This product contains Sodium azide: a POISONOUS AND HAZARDOUS SUBSTANCE which should be handled by trained staff only.

Storage: 4 °C,-20 °C

Storage Comment: Maintain refrigerated at 2-8 °C for up to 6 months. For long term storage store at -20 °C in small aliquots to prevent freeze-thaw cycles.

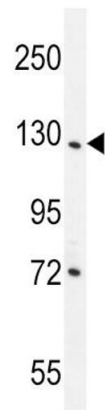
Expiry Date: 6 months

Images



Immunohistochemistry (Paraffin-embedded Sections)

Image 1. DDX60L Antibody (C-term) (ABIN655540 and ABIN2845051) immunohistochemistry analysis in formalin fixed and paraffin embedded human skeletal muscle followed by peroxidase conjugation of the secondary antibody and DAB staining. This data demonstrates the use of DDX60L Antibody (C-term) for immunohistochemistry. Clinical relevance has not been evaluated.



Western Blotting

Image 2. DDX60L Antibody (C-term) (ABIN655540 and ABIN2845051) western blot analysis in NCI- cell line lysates (35 µg/lane). This demonstrates the DDX60L antibody detected the DDX60L protein (arrow).