

Datasheet for ABIN655544  
**anti-ARL17A antibody (AA 102-130)**[Go to Product page](#)

## 3 Images

## Overview

Quantity:	400 µL
Target:	ARL17A
Binding Specificity:	AA 102-130
Reactivity:	Human
Host:	Rabbit
Clonality:	Polyclonal
Conjugate:	This ARL17A antibody is un-conjugated
Application:	Western Blotting (WB), Flow Cytometry (FACS), Immunohistochemistry (Paraffin-embedded Sections) (IHC (p))

## Product Details

Immunogen:	This ARL17P1 antibody is generated from rabbits immunized with a KLH conjugated synthetic peptide between 102-130 amino acids from the Central region of human ARL17P1.
Clone:	RB29207
Isotype:	Ig Fraction
Purification:	This antibody is purified through a protein A column, followed by peptide affinity purification.

## Target Details

Target:	ARL17A
Alternative Name:	ARL17P1 ( <a href="#">ARL17A Products</a> )

## Target Details

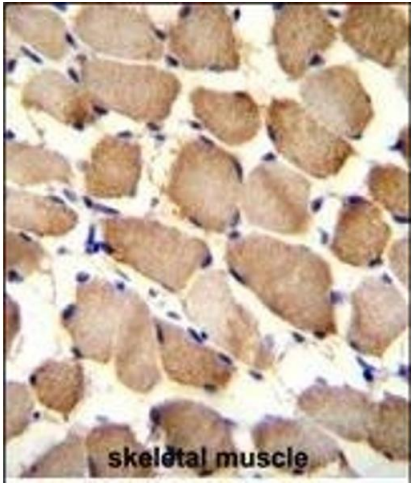
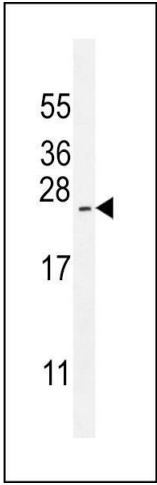
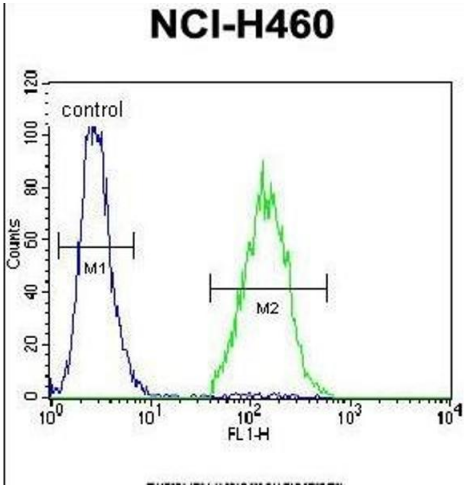
Background:	GTP-binding protein that functions as an allosteric activator of the cholera toxin catalytic subunit, an ADP-ribosyltransferase. Involved in protein trafficking, may modulate vesicle budding and uncoating within the Golgi apparatus (By similarity).
Molecular Weight:	19388
Gene ID:	51326, 641522
NCBI Accession:	<a href="#">NP_001034172</a> , <a href="#">NP_001096624</a> , <a href="#">NP_001107210</a> , <a href="#">NP_057716</a>
UniProt:	<a href="#">Q8IVW1</a>

## Application Details

Application Notes:	WB: 1:1000. IHC-P: 1:50~100. FC: 1:10~50
Restrictions:	For Research Use only

## Handling

Format:	Liquid
Buffer:	Purified polyclonal antibody supplied in PBS with 0.09 % (W/V) sodium azide.
Preservative:	Sodium azide
Precaution of Use:	This product contains Sodium azide: a POISONOUS AND HAZARDOUS SUBSTANCE which should be handled by trained staff only.
Storage:	4 °C, -20 °C
Storage Comment:	Maintain refrigerated at 2-8 °C for up to 6 months. For long term storage store at -20 °C in small aliquots to prevent freeze-thaw cycles.
Expiry Date:	6 months



### Flow Cytometry

**Image 1.** ARL17P1 Antibody (Center) (ABIN655544 and ABIN2845053) flow cytometric analysis of NCI- cells (right histogram) compared to a negative control cell (left histogram).FITC-conjugated goat-anti-rabbit secondary antibodies were used for the analysis.

### Western Blotting

**Image 2.** ARL17P1 Antibody (Center) (ABIN655544 and ABIN2845053) western blot analysis in NCI- cell line lysates (35 µg/lane).This demonstrates the ARL17P1 antibody detected the ARL17P1 protein (arrow).

### Immunohistochemistry (Paraffin-embedded Sections)

**Image 3.** ARL17P1 Antibody (Center) (ABIN655544 and ABIN2845053) immunohistochemistry analysis in formalin fixed and paraffin embedded human skeletal muscle followed by peroxidase conjugation of the secondary antibody and DAB staining.This data demonstrates the use of ARL17P1 Antibody (Center) for immunohistochemistry. Clinical relevance has not been evaluated.