

Datasheet for ABIN655545
anti-PLD5 antibody (C-Term)[Go to Product page](#)

3 Images

Overview

Quantity:	400 µL
Target:	PLD5
Binding Specificity:	AA 508-536, C-Term
Reactivity:	Human
Host:	Rabbit
Clonality:	Polyclonal
Conjugate:	This PLD5 antibody is un-conjugated
Application:	Western Blotting (WB), Immunofluorescence (IF), Immunohistochemistry (Paraffin-embedded Sections) (IHC (p))

Product Details

Immunogen:	This PLD5 antibody is generated from rabbits immunized with a KLH conjugated synthetic peptide between 508-536 amino acids from the C-terminal region of human PLD5.
Clone:	RB29209
Isotype:	Ig Fraction
Purification:	This antibody is purified through a protein A column, followed by peptide affinity purification.

Target Details

Target:	PLD5
Alternative Name:	PLD5 (PLD5 Products)

Target Details

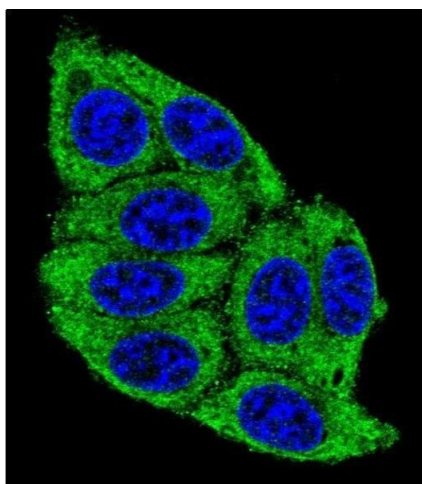
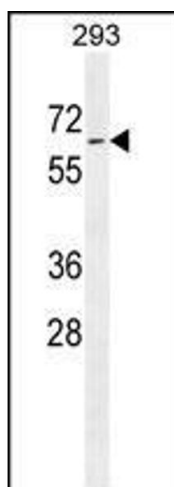
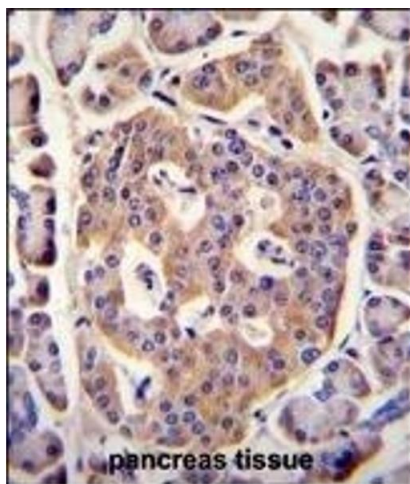
Background:	The specific function of the protein remains unknown.
Molecular Weight:	61312
Gene ID:	200150
NCBI Accession:	NP_001182740 , NP_001182741 , NP_689879
UniProt:	Q8N7P1

Application Details

Application Notes:	IF: 1:10~50. WB: 1:1000. IHC-P: 1:10~50
Restrictions:	For Research Use only

Handling

Format:	Liquid
Buffer:	Purified polyclonal antibody supplied in PBS with 0.09 % (W/V) sodium azide.
Preservative:	Sodium azide
Precaution of Use:	This product contains Sodium azide: a POISONOUS AND HAZARDOUS SUBSTANCE which should be handled by trained staff only.
Storage:	4 °C,-20 °C
Storage Comment:	Maintain refrigerated at 2-8 °C for up to 6 months. For long term storage store at -20 °C in small aliquots to prevent freeze-thaw cycles.
Expiry Date:	6 months



Immunohistochemistry (Paraffin-embedded Sections)

Image 1. PLD5 Antibody (C-term) (ABIN655545 and ABIN2845054) immunohistochemistry analysis in formalin fixed and paraffin embedded human pancreas tissue followed by peroxidase conjugation of the secondary antibody and DAB staining. This data demonstrates the use of PLD5 Antibody (C-term) for immunohistochemistry. Clinical relevance has not been evaluated.

Western Blotting

Image 2. PLD5 Antibody (C-term) (ABIN655545 and ABIN2845054) western blot analysis in 293 cell line lysates (35 µg/lane). This demonstrates the PLD5 antibody detected the PLD5 protein (arrow).

Immunofluorescence

Image 3. Confocal immunofluorescent analysis of PLD5 Antibody (C-term) (ABIN655545 and ABIN2845054) with 293 cell followed by Alexa Fluor 488-conjugated goat anti-rabbit IgG (green). DAPI was used to stain the cell nuclear (blue).