

Datasheet for ABIN655546
anti-KCTD8 antibody (C-Term)[Go to Product page](#)

2 Images

Overview

Quantity:	400 µL
Target:	KCTD8
Binding Specificity:	AA 434-462, C-Term
Reactivity:	Human, Mouse
Host:	Rabbit
Clonality:	Polyclonal
Conjugate:	This KCTD8 antibody is un-conjugated
Application:	Western Blotting (WB), Immunohistochemistry (Paraffin-embedded Sections) (IHC (p))

Product Details

Immunogen:	This KCTD8 antibody is generated from rabbits immunized with a KLH conjugated synthetic peptide between 434-462 amino acids from the C-terminal region of human KCTD8.
Clone:	RB29211
Isotype:	Ig Fraction
Purification:	This antibody is purified through a protein A column, followed by peptide affinity purification.

Target Details

Target:	KCTD8
Alternative Name:	KCTD8 (KCTD8 Products)
Background:	Auxiliary subunit of GABA-B receptors that determine the pharmacology and kinetics of the

Target Details

receptor response. Increases agonist potency and markedly alter the G-protein signaling of the receptors by accelerating onset and promoting desensitization (By similarity).

Gene ID: 386617

NCBI Accession: [NP_938167](#)

UniProt: [Q6ZWB6](#)

Pathways: [Regulation of G-Protein Coupled Receptor Protein Signaling](#)

Application Details

Application Notes: WB: 1:1000. IHC-P: 1:50~100

Restrictions: For Research Use only

Handling

Format: Liquid

Buffer: Purified polyclonal antibody supplied in PBS with 0.09 % (W/V) sodium azide.

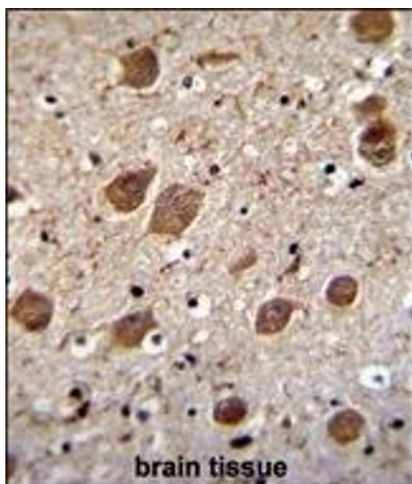
Preservative: Sodium azide

Precaution of Use: This product contains Sodium azide: a POISONOUS AND HAZARDOUS SUBSTANCE which should be handled by trained staff only.

Storage: 4 °C,-20 °C

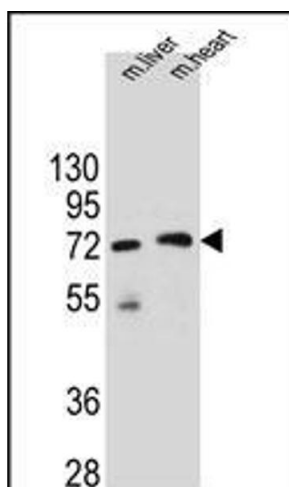
Storage Comment: Maintain refrigerated at 2-8 °C for up to 6 months. For long term storage store at -20 °C in small aliquots to prevent freeze-thaw cycles.

Expiry Date: 6 months



Immunohistochemistry (Paraffin-embedded Sections)

Image 1. KCTD8 Antibody (C-term) (ABIN655546 and ABIN2845055) immunohistochemistry analysis in formalin fixed and paraffin embedded human brain tissue followed by peroxidase conjugation of the secondary antibody and DAB staining. This data demonstrates the use of KCTD8 Antibody (C-term) for immunohistochemistry. Clinical relevance has not been evaluated.



Western Blotting

Image 2. KCTD8 Antibody (C-term) (ABIN655546 and ABIN2845055) western blot analysis in mouse liver and heart tissue lysates (35 µg/lane). This demonstrates the KCTD8 antibody detected the KCTD8 protein (arrow).