



[Go to Product page](#)

Datasheet for ABIN655561

anti-TTC23L antibody (C-Term)

2 Images

Overview

Quantity:	400 µL
Target:	TTC23L
Binding Specificity:	AA 319-348, C-Term
Reactivity:	Mouse
Host:	Rabbit
Clonality:	Polyclonal
Conjugate:	This TTC23L antibody is un-conjugated
Application:	Western Blotting (WB), Immunohistochemistry (Paraffin-embedded Sections) (IHC (p))

Product Details

Immunogen:	This TTC23L antibody is generated from rabbits immunized with a KLH conjugated synthetic peptide between 319-348 amino acids from the C-terminal region of human TTC23L.
Clone:	RB29543
Isotype:	Ig Fraction
Purification:	This antibody is purified through a protein A column, followed by peptide affinity purification.

Target Details

Target:	TTC23L
Alternative Name:	TTC23L (TTC23L Products)
Background:	The specific function of the protein remains unknown.

Target Details

Molecular Weight:	40837
Gene ID:	153657
NCBI Accession:	NP_653326
UniProt:	Q6PF05

Application Details

Application Notes:	WB: 1:1000. IHC-P: 1:10~50
Restrictions:	For Research Use only

Handling

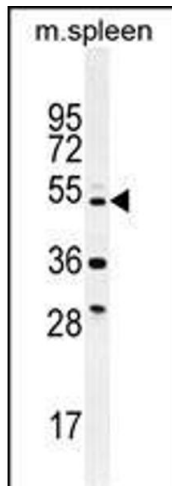
Format:	Liquid
Buffer:	Purified polyclonal antibody supplied in PBS with 0.09 % (W/V) sodium azide.
Preservative:	Sodium azide
Precaution of Use:	This product contains Sodium azide: a POISONOUS AND HAZARDOUS SUBSTANCE which should be handled by trained staff only.
Storage:	4 °C,-20 °C
Storage Comment:	Maintain refrigerated at 2-8 °C for up to 6 months. For long term storage store at -20 °C in small aliquots to prevent freeze-thaw cycles.
Expiry Date:	6 months

Images



Immunohistochemistry (Paraffin-embedded Sections)

Image 1. TTC23L Antibody (C-term) (ABIN655561 and ABIN2845064) immunohistochemistry analysis in formalin fixed and paraffin embedded human testis tissue followed by peroxidase conjugation of the secondary antibody and DAB staining. This data demonstrates the use of TTC23L Antibody (C-term) for immunohistochemistry. Clinical relevance has not been evaluated.



Western Blotting

Image 2. TTC23L Antibody (C-term) (ABIN655561 and ABIN2845064) western blot analysis in mouse spleen tissue lysates (35 µg/lane). This demonstrates the TTC23L antibody detected the TTC23L protein (arrow).