



[Go to Product page](#)

Datasheet for ABIN655563  
**anti-SEC14L5 antibody (AA 448-477)**

2 Images

Overview

Quantity:	400 µL
Target:	SEC14L5
Binding Specificity:	AA 448-477
Reactivity:	Human
Host:	Rabbit
Clonality:	Polyclonal
Conjugate:	This SEC14L5 antibody is un-conjugated
Application:	Western Blotting (WB), Immunohistochemistry (Paraffin-embedded Sections) (IHC (p))

Product Details

Immunogen:	This SEC14L5 antibody is generated from rabbits immunized with a KLH conjugated synthetic peptide between 448-477 amino acids from the Central region of human SEC14L5.
Clone:	RB29552
Isotype:	Ig Fraction
Purification:	This antibody is purified through a protein A column, followed by peptide affinity purification.

Target Details

Target:	SEC14L5
Alternative Name:	SEC14L5 ( <a href="#">SEC14L5 Products</a> )
Background:	The specific function of the protein remains unknown.

## Target Details

Molecular Weight:	78942
Gene ID:	9717
NCBI Accession:	<a href="#">NP_055507</a>
UniProt:	<a href="#">O43304</a>

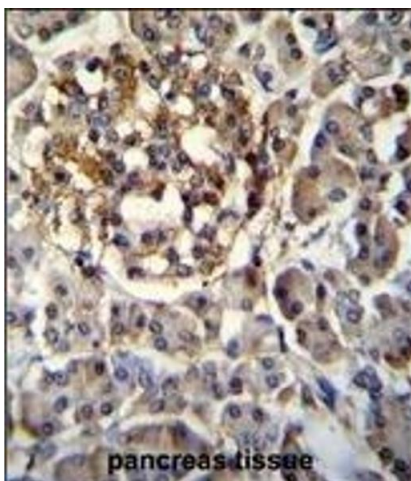
## Application Details

Application Notes:	WB: 1:1000. IHC-P: 1:10~50
Restrictions:	For Research Use only

## Handling

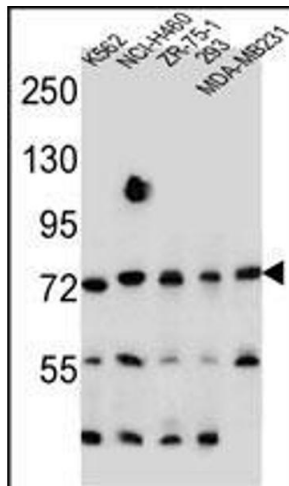
Format:	Liquid
Buffer:	Purified polyclonal antibody supplied in PBS with 0.09 % (W/V) sodium azide.
Preservative:	Sodium azide
Precaution of Use:	This product contains Sodium azide: a POISONOUS AND HAZARDOUS SUBSTANCE which should be handled by trained staff only.
Storage:	4 °C,-20 °C
Storage Comment:	Maintain refrigerated at 2-8 °C for up to 6 months. For long term storage store at -20 °C in small aliquots to prevent freeze-thaw cycles.
Expiry Date:	6 months

## Images



### Immunohistochemistry (Paraffin-embedded Sections)

**Image 1.** SEC14L5 Antibody (Center) (ABIN655563 and ABIN2845065) immunohistochemistry analysis in formalin fixed and paraffin embedded human pancreas tissue followed by peroxidase conjugation of the secondary antibody and DAB staining. This data demonstrates the use of SEC14L5 Antibody (Center) for immunohistochemistry. Clinical relevance has not been evaluated.



### Western Blotting

**Image 2.** SEC14L5 Antibody (Center) (ABIN655563 and ABIN2845065) western blot analysis in K562,NCI,ZR-75-1,293,MDA-M cell line lysates (35 µg/lane).This demonstrates the SEC14L5 antibody detected the SEC14L5 protein (arrow).