



[Go to Product page](#)

Datasheet for ABIN655567

anti-BTBD17 antibody (C-Term)

2 Images

Overview

Quantity:	400 µL
Target:	BTBD17
Binding Specificity:	AA 411-440, C-Term
Reactivity:	Mouse
Host:	Rabbit
Clonality:	Polyclonal
Conjugate:	This BTBD17 antibody is un-conjugated
Application:	Western Blotting (WB), Immunohistochemistry (Paraffin-embedded Sections) (IHC (p))

Product Details

Immunogen:	This BTBD17 antibody is generated from rabbits immunized with a KLH conjugated synthetic peptide between 411-440 amino acids from the C-terminal region of human BTBD17.
Clone:	RB29630
Isotype:	Ig Fraction
Purification:	This antibody is purified through a protein A column, followed by peptide affinity purification.

Target Details

Target:	BTBD17
Alternative Name:	BTBD17 (BTBD17 Products)
Background:	The specific function of the protein remains unknown.

Target Details

Gene ID: 388419

NCBI Accession: [NP_001073935](#)

UniProt: [A6NE02](#)

Application Details

Application Notes: WB: 1:1000. IHC-P: 1:10~50

Restrictions: For Research Use only

Handling

Format: Liquid

Buffer: Purified polyclonal antibody supplied in PBS with 0.09 % (W/V) sodium azide.

Preservative: Sodium azide

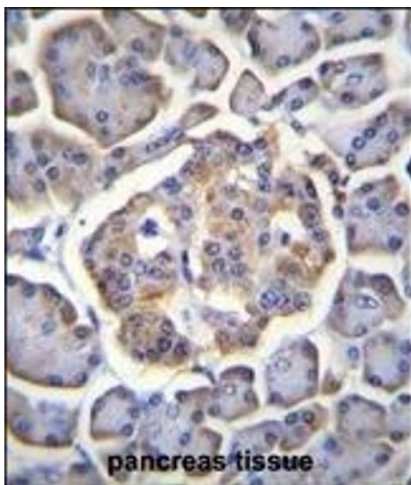
Precaution of Use: This product contains Sodium azide: a POISONOUS AND HAZARDOUS SUBSTANCE which should be handled by trained staff only.

Storage: 4 °C,-20 °C

Storage Comment: Maintain refrigerated at 2-8 °C for up to 6 months. For long term storage store at -20 °C in small aliquots to prevent freeze-thaw cycles.

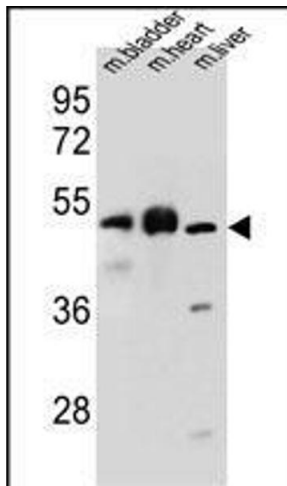
Expiry Date: 6 months

Images



Immunohistochemistry (Paraffin-embedded Sections)

Image 1. BTBD17 Antibody (C-term) (ABIN655567 and ABIN2845068) immunohistochemistry analysis in formalin fixed and paraffin embedded human pancreas tissue followed by peroxidase conjugation of the secondary antibody and DAB staining. This data demonstrates the use of BTBD17 Antibody (C-term) for immunohistochemistry. Clinical relevance has not been evaluated.



Western Blotting

Image 2. BTBD17 Antibody (C-term) (ABIN655567 and ABIN2845068) western blot analysis in mouse bladder, heart, liver tissue lysates (35 µg/lane). This demonstrates the BTBD17 antibody detected the BTBD17 protein (arrow).