

Datasheet for ABIN655588

**anti-ABHD9 antibody (C-Term)**[Go to Product page](#)**2** Images

## Overview

Quantity:	400 µL
Target:	ABHD9 (EPHX3)
Binding Specificity:	AA 266-294, C-Term
Reactivity:	Human
Host:	Rabbit
Clonality:	Polyclonal
Conjugate:	This ABHD9 antibody is un-conjugated
Application:	Western Blotting (WB), Immunohistochemistry (Paraffin-embedded Sections) (IHC (p))

## Product Details

Immunogen:	This EPX3 antibody is generated from rabbits immunized with a KLH conjugated synthetic peptide between 266-294 amino acids from the C-terminal region of human EPX3.
Clone:	RB29848
Isotype:	Ig Fraction
Purification:	This antibody is purified through a protein A column, followed by peptide affinity purification.

## Target Details

Target:	ABHD9 (EPHX3)
Alternative Name:	EPHX3 ( <a href="#">EPHX3 Products</a> )
Background:	The specific function of the protein remains unknown.

## Target Details

Molecular Weight:	40909
Gene ID:	79852
NCBI Accession:	<a href="#">NP_001136358</a> , <a href="#">NP_079070</a>
UniProt:	<a href="#">Q9H6B9</a>

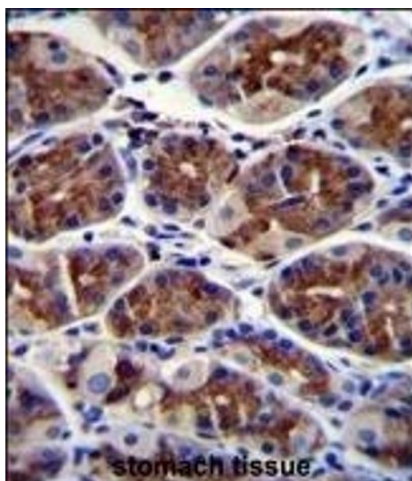
## Application Details

Application Notes:	WB: 1:1000. IHC-P: 1:10~50
Restrictions:	For Research Use only

## Handling

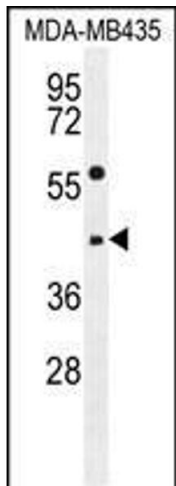
Format:	Liquid
Buffer:	Purified polyclonal antibody supplied in PBS with 0.09 % (W/V) sodium azide.
Preservative:	Sodium azide
Precaution of Use:	This product contains Sodium azide: a POISONOUS AND HAZARDOUS SUBSTANCE which should be handled by trained staff only.
Storage:	4 °C, -20 °C
Storage Comment:	Maintain refrigerated at 2-8 °C for up to 6 months. For long term storage store at -20 °C in small aliquots to prevent freeze-thaw cycles.
Expiry Date:	6 months

## Images



### Immunohistochemistry (Paraffin-embedded Sections)

**Image 1.** EPHX3 Antibody (C-term) (ABIN655588 and ABIN2845075) immunohistochemistry analysis in formalin fixed and paraffin embedded human stomach tissue followed by peroxidase conjugation of the secondary antibody and DAB staining. This data demonstrates the use of EPHX3 Antibody (C-term) for immunohistochemistry. Clinical relevance has not been evaluated.



Western Blotting

**Image 2.** EPHX3 Antibody (C-term) (ABIN655588 and ABIN2845075) western blot analysis in MDA-M cell line lysates (35 µg/lane). This demonstrates the EPHX3 antibody detected the EPHX3 protein (arrow).