

Datasheet for ABIN655589
anti-HEXIM1 antibody (AA 194-222)[Go to Product page](#)

2 Images

Overview

Quantity:	400 µL
Target:	HEXIM1
Binding Specificity:	AA 194-222
Reactivity:	Mouse
Host:	Rabbit
Clonality:	Polyclonal
Conjugate:	This HEXIM1 antibody is un-conjugated
Application:	Western Blotting (WB), Immunohistochemistry (Paraffin-embedded Sections) (IHC (p))

Product Details

Immunogen:	This HEXIM1 antibody is generated from rabbits immunized with a KLH conjugated synthetic peptide between 194-222 amino acids from the Central region of human HEXIM1.
Clone:	RB29909
Isotype:	Ig Fraction
Predicted Reactivity:	B, Rat
Purification:	This antibody is purified through a protein A column, followed by peptide affinity purification.

Target Details

Target:	HEXIM1
Alternative Name:	HEXIM1 (HEXIM1 Products)

Target Details

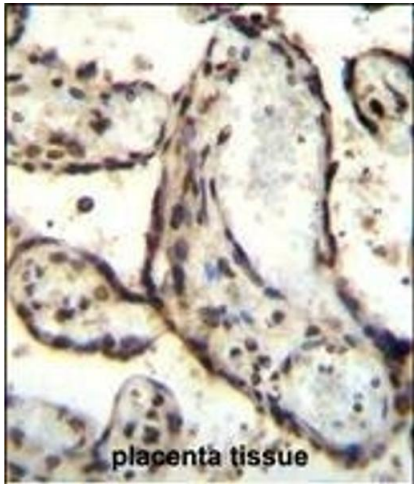
Background:	Expression of this gene is induced by hexamethylene-bis-acetamide in vascular smooth muscle cells. This gene has no introns.
Molecular Weight:	40623
Gene ID:	10614
NCBI Accession:	NP_006451
UniProt:	O94992

Application Details

Application Notes:	WB: 1:1000. IHC-P: 1:10~50
Restrictions:	For Research Use only

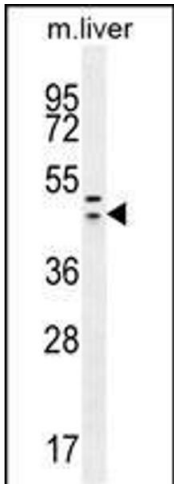
Handling

Format:	Liquid
Buffer:	Purified polyclonal antibody supplied in PBS with 0.09 % (W/V) sodium azide.
Preservative:	Sodium azide
Precaution of Use:	This product contains Sodium azide: a POISONOUS AND HAZARDOUS SUBSTANCE which should be handled by trained staff only.
Storage:	4 °C,-20 °C
Storage Comment:	Maintain refrigerated at 2-8 °C for up to 6 months. For long term storage store at -20 °C in small aliquots to prevent freeze-thaw cycles.
Expiry Date:	6 months



Immunohistochemistry (Paraffin-embedded Sections)

Image 1. HEXIM1 antibody (Center) (ABIN655589 and ABIN2845076) immunohistochemistry analysis in formalin fixed and paraffin embedded human placenta tissue followed by peroxidase conjugation of the secondary antibody and DAB staining. This data demonstrates the use of HEXIM1 antibody (Center) for immunohistochemistry. Clinical relevance has not been evaluated.



Western Blotting

Image 2. HEXIM1 antibody (Center) (ABIN655589 and ABIN2845076) western blot analysis in mouse liver tissue lysates (35 µg/lane). This demonstrates the HEXIM1 antibody detected the HEXIM1 protein (arrow).