

Datasheet for ABIN655602
anti-PCDH20 antibody (AA 445-472)



[Go to Product page](#)

5 Images

Overview

| | |
|----------------------|---|
| Quantity: | 400 µL |
| Target: | PCDH20 |
| Binding Specificity: | AA 445-472 |
| Reactivity: | Human, Rat |
| Host: | Rabbit |
| Clonality: | Polyclonal |
| Conjugate: | This PCDH20 antibody is un-conjugated |
| Application: | Western Blotting (WB), Flow Cytometry (FACS), Immunofluorescence (IF), Immunohistochemistry (Paraffin-embedded Sections) (IHC (p)) |

Product Details

| | |
|---------------|---|
| Immunogen: | This PCDH20 antibody is generated from rabbits immunized with a KLH conjugated synthetic peptide between 445-472 amino acids from the Central region of human PCDH20. |
| Clone: | RB31527 |
| Isotype: | Ig Fraction |
| Purification: | This antibody is purified through a protein A column, followed by peptide affinity purification. |

Target Details

| | |
|-------------------|--|
| Target: | PCDH20 |
| Alternative Name: | PCDH20 (PCDH20 Products) |

Target Details

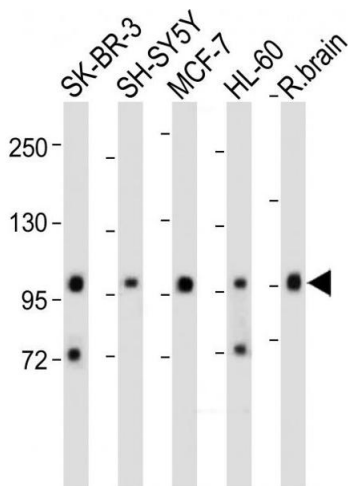
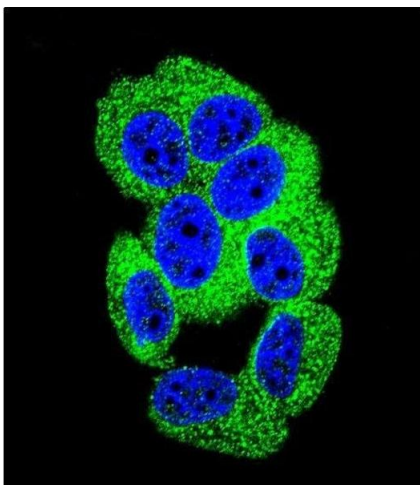
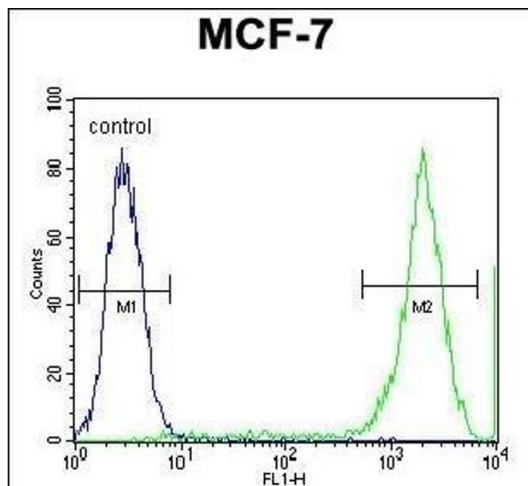
| | |
|-------------------|--|
| Background: | <p>This gene belongs to the protocadherin gene family, a subfamily of the cadherin superfamily. This gene encodes a protein which contains 6 extracellular cadherin domains, a transmembrane domain and a cytoplasmic tail differing from those of the classical cadherins. Although its specific function is undetermined, the cadherin-related neuronal receptor is thought to play a role in the establishment and function of specific cell-cell connections in the brain.</p> |
| Molecular Weight: | 104919 |
| Gene ID: | 64881 |
| NCBI Accession: | NP_073754 |
| UniProt: | Q8N6Y1 |

Application Details

| | |
|--------------------|--|
| Application Notes: | IF: 1:10~50. WB: 1:2000. WB: 1:1000. IHC-P: 1:10~50. FC: 1:10~50 |
| Restrictions: | For Research Use only |

Handling

| | |
|--------------------|--|
| Format: | Liquid |
| Buffer: | Purified polyclonal antibody supplied in PBS with 0.09 % (W/V) sodium azide. |
| Preservative: | Sodium azide |
| Precaution of Use: | This product contains Sodium azide: a POISONOUS AND HAZARDOUS SUBSTANCE which should be handled by trained staff only. |
| Storage: | 4 °C, -20 °C |
| Storage Comment: | Maintain refrigerated at 2-8 °C for up to 6 months. For long term storage store at -20 °C in small aliquots to prevent freeze-thaw cycles. |
| Expiry Date: | 6 months |



Flow Cytometry

Image 1. PCDH20 Antibody (Center) (ABIN655602 and ABIN2845086) flow cytometric analysis of MCF-7 cells (right histogram) compared to a negative control cell (left histogram). FITC-conjugated goat-anti-rabbit secondary antibodies were used for the analysis.

Immunofluorescence

Image 2. Confocal immunofluorescent analysis of PCDH20 Antibody (Center) (ABIN655602 and ABIN2845086) with MCF-7 cell followed by Alexa Fluor 488-conjugated goat anti-rabbit IgG (green). DI was used to stain the cell nuclear (blue).

Western Blotting

Image 3. All lanes : Anti-PCDH20 Antibody (Center) at 1:2000 dilution Lane 1: SK-BR-3 whole cell lysate Lane 2: SH-SY5Y whole cell lysate Lane 3: MCF-7 whole cell lysate Lane 4: HL-60 whole cell lysate Lane 5: Rat brain whole cell lysate Lysates/proteins at 20 µg per lane. Secondary Goat Anti-Rabbit IgG, (H+L), Peroxidase conjugated at 1/10000 dilution. Predicted band size : 105 kDa Blocking/Dilution buffer: 5 % NFDM/TBST.

Please check the [product details page](#) for more images. Overall 5 images are available for ABIN655602.