

Datasheet for ABIN655604  
**anti-CHRND antibody (AA 168-196)**[Go to Product page](#)

## 2 Images

## Overview

Quantity:	400 µL
Target:	CHRND
Binding Specificity:	AA 168-196
Reactivity:	Human
Host:	Rabbit
Clonality:	Polyclonal
Conjugate:	This CHRND antibody is un-conjugated
Application:	Western Blotting (WB), Flow Cytometry (FACS)

## Product Details

Immunogen:	This CHRND antibody is generated from rabbits immunized with a KLH conjugated synthetic peptide between 168-196 amino acids from the Central region of human CHRND.
Clone:	RB31740
Isotype:	Ig Fraction
Purification:	This antibody is purified through a protein A column, followed by peptide affinity purification.

## Target Details

Target:	CHRND
Alternative Name:	CHRND ( <a href="#">CHRND Products</a> )
Background:	The acetylcholine receptor of muscle has 5 subunits of 4 different types: 2 alpha and 1 each of

## Target Details

beta, gamma and delta subunits. After acetylcholine binding, the receptor undergoes an extensive conformation change that affects all subunits and leads to opening of an ion-conducting channel across the plasma membrane.

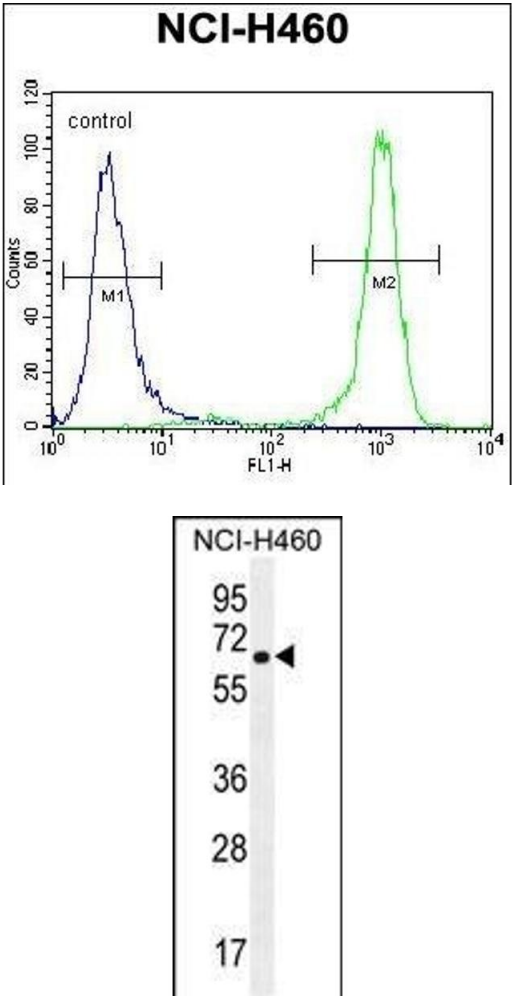
Molecular Weight:	58895
Gene ID:	1144
NCBI Accession:	<a href="#">NP_000742</a> , <a href="#">NP_001243586</a>
UniProt:	<a href="#">Q07001</a>

## Application Details

Application Notes:	WB: 1:1000. FC: 1:10~50
Restrictions:	For Research Use only

## Handling

Format:	Liquid
Buffer:	Purified polyclonal antibody supplied in PBS with 0.09 % (W/V) sodium azide.
Preservative:	Sodium azide
Precaution of Use:	This product contains Sodium azide: a POISONOUS AND HAZARDOUS SUBSTANCE which should be handled by trained staff only.
Storage:	4 °C, -20 °C
Storage Comment:	Maintain refrigerated at 2-8 °C for up to 6 months. For long term storage store at -20 °C in small aliquots to prevent freeze-thaw cycles.
Expiry Date:	6 months



### Flow Cytometry

**Image 1.** CHRND Antibody (Center) (ABIN655604 and ABIN2845088) flow cytometric analysis of NCI- cells (right histogram) compared to a negative control cell (left histogram).FITC-conjugated goat-anti-rabbit secondary antibodies were used for the analysis.

### Western Blotting

**Image 2.** CHRND Antibody (Center) (ABIN655604 and ABIN2845088) western blot analysis in NCI- cell line lysates (35 µg/lane).This demonstrates the CHRND antibody detected the CHRND protein (arrow).