

Datasheet for ABIN655608

anti-Cytochrome C1 antibody (C-Term)**3** Images[Go to Product page](#)

Overview

Quantity:	400 µL
Target:	Cytochrome C1 (CYC1)
Binding Specificity:	AA 263-291, C-Term
Reactivity:	Human, Mouse
Host:	Rabbit
Clonality:	Polyclonal
Conjugate:	This Cytochrome C1 antibody is un-conjugated
Application:	Western Blotting (WB), Flow Cytometry (FACS)

Product Details

Immunogen:	This CYC1 antibody is generated from rabbits immunized with a KLH conjugated synthetic peptide between 263-291 amino acids from the C-terminal region of human CYC1.
Clone:	RB31762
Isotype:	Ig Fraction
Purification:	This antibody is purified through a protein A column, followed by peptide affinity purification.

Target Details

Target:	Cytochrome C1 (CYC1)
Alternative Name:	CYC1 (CYC1 Products)
Background:	This is the heme-containing component of the cytochrome b-c1 complex, which accepts

Target Details

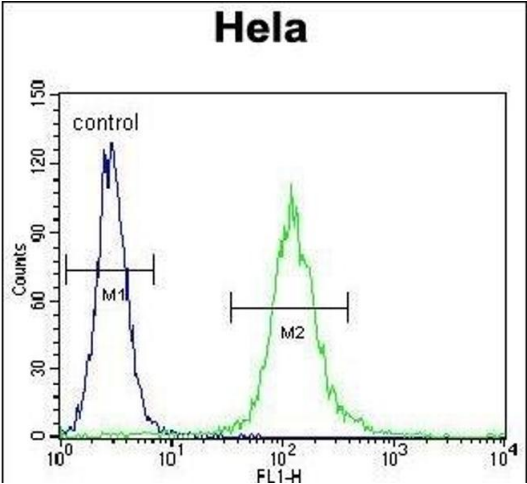
	electrons from Rieske protein and transfers electrons to cytochrome c in the mitochondrial respiratory chain.
Molecular Weight:	35422
Gene ID:	1537
NCBI Accession:	NP_001907
UniProt:	P08574

Application Details

Application Notes:	WB: 1:1000. WB: 1:1000. FC: 1:10~50
Restrictions:	For Research Use only

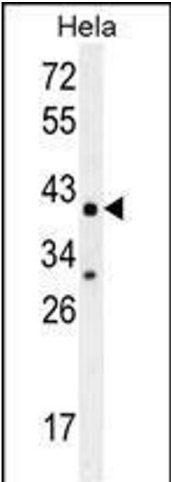
Handling

Format:	Liquid
Buffer:	Purified polyclonal antibody supplied in PBS with 0.09 % (W/V) sodium azide.
Preservative:	Sodium azide
Precaution of Use:	This product contains Sodium azide: a POISONOUS AND HAZARDOUS SUBSTANCE which should be handled by trained staff only.
Storage:	4 °C,-20 °C
Storage Comment:	Maintain refrigerated at 2-8 °C for up to 6 months. For long term storage store at -20 °C in small aliquots to prevent freeze-thaw cycles.
Expiry Date:	6 months



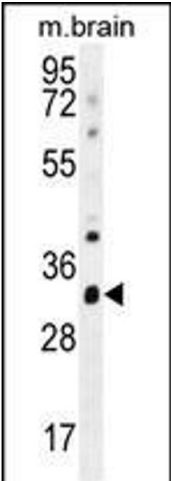
Flow Cytometry

Image 1. CYC1 Antibody (C-term) (ABIN655608 and ABIN2845091) flow cytometric analysis of Hela cells (right histogram) compared to a negative control cell (left histogram).FITC-conjugated goat-anti-rabbit secondary antibodies were used for the analysis.



Western Blotting

Image 2. CYC1 Antibody (C-term) (ABIN655608 and ABIN2845091) western blot analysis in Hela cell line lysates (35 µg/lane).This demonstrates the CYC1 antibody detected the CYC1 protein (arrow).



Western Blotting

Image 3. CYC1 Antibody (C-term) (ABIN655608 and ABIN2845091) western blot analysis in mouse brain tissue lysates (35 µg/lane).This demonstrates the CYC1 antibody detected the CYC1 protein (arrow).