

Datasheet for ABIN655611
anti-TWF2 antibody (N-Term)[Go to Product page](#)

4 Images

Overview

Quantity:	400 µL
Target:	TWF2
Binding Specificity:	AA 28-57, N-Term
Reactivity:	Human, Mouse
Host:	Rabbit
Clonality:	Polyclonal
Conjugate:	This TWF2 antibody is un-conjugated
Application:	Western Blotting (WB), Flow Cytometry (FACS), Immunohistochemistry (Paraffin-embedded Sections) (IHC (p))

Product Details

Immunogen:	This PTK9L antibody is generated from rabbits immunized with a KLH conjugated synthetic peptide between 28-57 amino acids from the N-terminal region of human PTK9L.
Clone:	RB09876
Isotype:	Ig Fraction
Purification:	This antibody is purified through a protein A column, followed by peptide affinity purification.

Target Details

Target:	TWF2
Alternative Name:	PTK9L (TWF2 Products)

Target Details

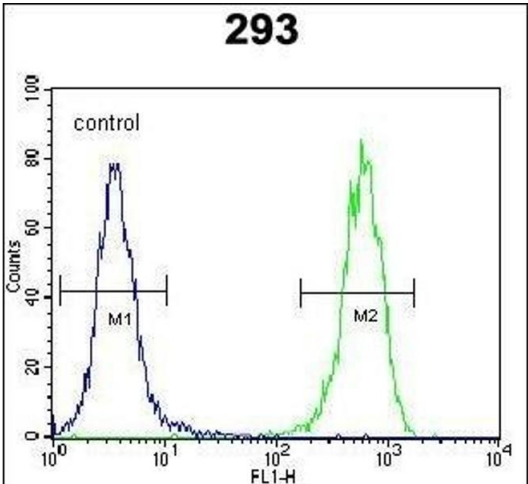
Background:	The protein encoded by this gene was identified by its interaction with the catalytic domain of protein kinase C-zeta. The encoded protein contains an actin-binding site and an ATP-binding site. It is most closely related to twinfilin (PTK9), a conserved actin monomer-binding protein.
Molecular Weight:	39548
Gene ID:	11344
NCBI Accession:	NP_009215
UniProt:	Q6IBS0
Pathways:	Regulation of Actin Filament Polymerization , Regulation of Cell Size , Maintenance of Protein Location , Toll-Like Receptors Cascades

Application Details

Application Notes:	WB: 1:1000. WB: 1:1000. IHC-P: 1:50~100. FC: 1:10~50
Restrictions:	For Research Use only

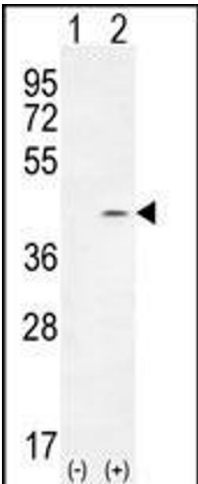
Handling

Format:	Liquid
Buffer:	Purified polyclonal antibody supplied in PBS with 0.09 % (W/V) sodium azide.
Preservative:	Sodium azide
Precaution of Use:	This product contains Sodium azide: a POISONOUS AND HAZARDOUS SUBSTANCE which should be handled by trained staff only.
Storage:	4 °C,-20 °C
Storage Comment:	Maintain refrigerated at 2-8 °C for up to 6 months. For long term storage store at -20 °C in small aliquots to prevent freeze-thaw cycles.
Expiry Date:	6 months



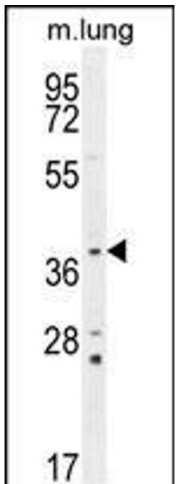
Flow Cytometry

Image 1. PTK9L Antibody (N-term) (ABIN655611 and ABIN2845093) flow cytometric analysis of 293 cells (right histogram) compared to a negative control cell (left histogram). FITC-conjugated goat-anti-rabbit secondary antibodies were used for the analysis.



Western Blotting

Image 2. Western blot analysis of PTK9L (arrow) using rabbit polyclonal PTK9L Antibody (N-term) (ABIN655611 and ABIN2845093). 293 cell lysates (2 µg/lane) either nontransfected (Lane 1) or transiently transfected (Lane 2) with the PTK9L gene.



Western Blotting

Image 3. PTK9L Antibody (N-term) (ABIN655611 and ABIN2845093) western blot analysis in mouse lung tissue lysates (35 µg/lane). This demonstrates the PTK9L antibody detected the PTK9L protein (arrow).

Please check the [product details page](#) for more images. Overall 4 images are available for ABIN655611.