

Datasheet for ABIN655615  
**anti-Betacellulin antibody (N-Term)**[Go to Product page](#)

## 4 Images

## Overview

Quantity:	400 µL
Target:	Betacellulin (BTC)
Binding Specificity:	AA 17-45, N-Term
Reactivity:	Human
Host:	Rabbit
Clonality:	Polyclonal
Conjugate:	This Betacellulin antibody is un-conjugated
Application:	Western Blotting (WB), Flow Cytometry (FACS), Immunohistochemistry (Paraffin-embedded Sections) (IHC (p)), Immunofluorescence (IF)

## Product Details

Immunogen:	This BTC antibody is generated from rabbits immunized with a KLH conjugated synthetic peptide between 17-45 amino acids from the N-terminal region of human BTC.
Clone:	RB14431
Isotype:	Ig Fraction
Purification:	This antibody is prepared by Saturated Ammonium Sulfate (SAS) precipitation followed by dialysis against PBS.

## Target Details

Target:	Betacellulin (BTC)
Alternative Name:	BTC ( <a href="#">BTC Products</a> )

## Target Details

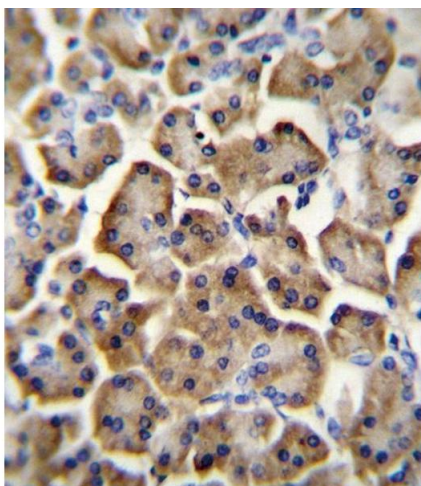
Background:	The protein encoded by this gene is a member of the EGF family of growth factors. It is synthesized primarily as a transmembrane precursor, which is then processed to mature molecule by proteolytic events. This protein is a ligand for the EGF receptor.
Gene ID:	685
NCBI Accession:	<a href="#">NP_001720</a>
UniProt:	<a href="#">P35070</a>
Pathways:	<a href="#">RTK Signaling</a> , <a href="#">Fc-epsilon Receptor Signaling Pathway</a> , <a href="#">EGFR Signaling Pathway</a> , <a href="#">Neurotrophin Signaling Pathway</a>

## Application Details

Application Notes:	IF: 1:10~50. WB: 1:1000. IHC-P: 1:10~50. FC: 1:10~50
Restrictions:	For Research Use only

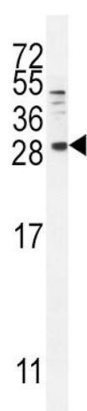
## Handling

Format:	Liquid
Buffer:	Purified polyclonal antibody supplied in PBS with 0.09 % (W/V) sodium azide.
Preservative:	Sodium azide
Precaution of Use:	This product contains Sodium azide: a POISONOUS AND HAZARDOUS SUBSTANCE which should be handled by trained staff only.
Storage:	4 °C,-20 °C
Storage Comment:	Maintain refrigerated at 2-8 °C for up to 6 months. For long term storage store at -20 °C in small aliquots to prevent freeze-thaw cycles.
Expiry Date:	6 months



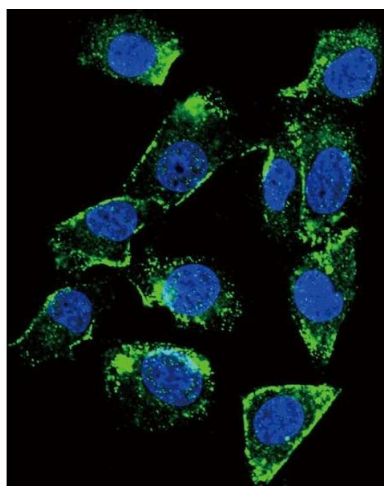
#### Immunohistochemistry (Paraffin-embedded Sections)

**Image 1.** BTC Antibody (N-term) (ABIN655615 and ABIN2845096) immunohistochemistry analysis in formalin fixed and paraffin embedded human pancreas tissue followed by peroxidase conjugation of the secondary antibody and DAB staining. This data demonstrates the use of BTC Antibody (N-term) for immunohistochemistry. Clinical relevance has not been evaluated.



#### Western Blotting

**Image 2.** BTC Antibody (N-term) (ABIN655615 and ABIN2845096) western blot analysis in MDA-M cell line lysates (35 µg/lane). This demonstrates the BTC antibody detected the BTC protein (arrow).



#### Immunofluorescence

**Image 3.** Confocal immunofluorescent analysis of BTC Antibody (N-term) (ABIN655615 and ABIN2845096) with MDA-M cell followed by Alexa Fluor 488-conjugated goat anti-rabbit IgG (green). DAPI was used to stain the cell nuclear (blue).

Please check the [product details page](#) for more images. Overall 4 images are available for ABIN655615.