



[Go to Product page](#)

Datasheet for ABIN655618
anti-GDF6 antibody (N-Term)

3 Images

Overview

Quantity:	400 µL
Target:	GDF6
Binding Specificity:	AA 31-59, N-Term
Reactivity:	Mouse
Host:	Rabbit
Clonality:	Polyclonal
Conjugate:	This GDF6 antibody is un-conjugated
Application:	Western Blotting (WB), Flow Cytometry (FACS), Immunohistochemistry (Paraffin-embedded Sections) (IHC (p))

Product Details

Immunogen:	This GDF6 antibody is generated from rabbits immunized with a KLH conjugated synthetic peptide between 31-59 amino acids from the N-terminal region of human GDF6.
Clone:	RB14527
Isotype:	Ig Fraction
Purification:	This antibody is prepared by Saturated Ammonium Sulfate (SAS) precipitation followed by dialysis against PBS.

Target Details

Target:	GDF6
Alternative Name:	GDF6 (GDF6 Products)

Target Details

Background: This gene encodes a member of the bone morphogenetic protein (BMP) family and the TGF-beta superfamily of secreted signaling molecules. It is required for normal formation of some bones and joints in the limbs, skull, and axial skeleton. Mutations in this gene result in colobomata, which are congenital abnormalities in ocular development, and in Klippel-Feil syndrome (KFS), which is a congenital disorder of spinal segmentation.

Molecular Weight: 50662

Gene ID: 392255

NCBI Accession: [NP_001001557](#)

UniProt: [Q6KF10](#)

Application Details

Application Notes: WB: 1:1000. IHC-P: 1:50~100. FC: 1:10~50

Restrictions: For Research Use only

Handling

Format: Liquid

Buffer: Purified polyclonal antibody supplied in PBS with 0.09 % (W/V) sodium azide.

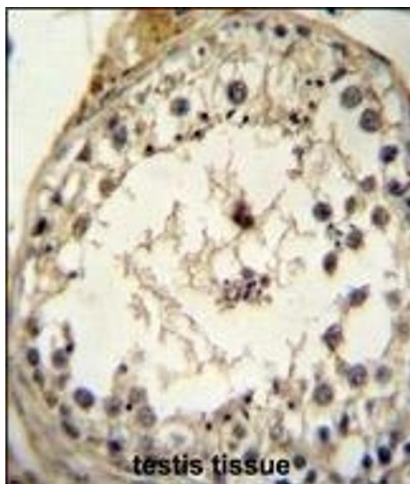
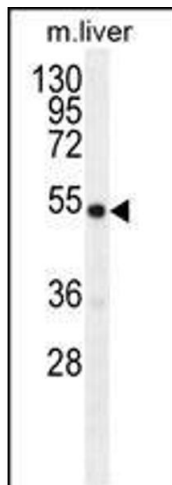
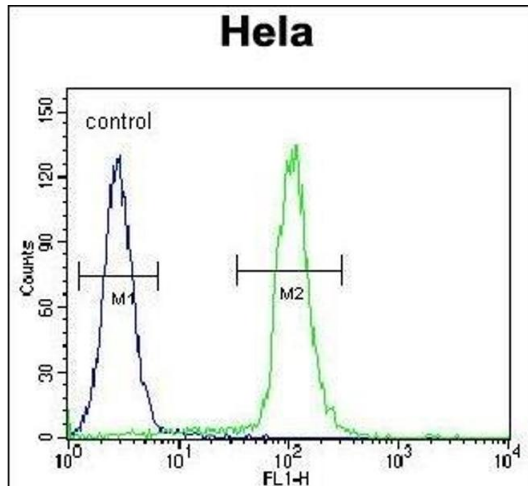
Preservative: Sodium azide

Precaution of Use: This product contains Sodium azide: a POISONOUS AND HAZARDOUS SUBSTANCE which should be handled by trained staff only.

Storage: 4 °C,-20 °C

Storage Comment: Maintain refrigerated at 2-8 °C for up to 6 months. For long term storage store at -20 °C in small aliquots to prevent freeze-thaw cycles.

Expiry Date: 6 months



Flow Cytometry

Image 1. GDF6 Antibody (N-term) (ABIN655618 and ABIN2845098) flow cytometric analysis of HeLa cells (right histogram) compared to a negative control cell (left histogram). FITC-conjugated goat-anti-rabbit secondary antibodies were used for the analysis.

Western Blotting

Image 2. GDF6 Antibody (N-term) (ABIN655618 and ABIN2845098) western blot analysis in mouse liver tissue lysates (35 µg/lane). This demonstrates the GDF6 antibody detected the GDF6 protein (arrow).

Immunohistochemistry (Paraffin-embedded Sections)

Image 3. GDF6 Antibody (N-term) (ABIN655618 and ABIN2845098) immunohistochemistry analysis in formalin fixed and paraffin embedded human testis tissue followed by peroxidase conjugation of the secondary antibody and DAB staining. This data demonstrates the use of GDF6 Antibody (N-term) for immunohistochemistry. Clinical relevance has not been evaluated.