

Datasheet for ABIN655620  
**anti-Glypican 6 antibody (C-Term)**

## 3 Images

[Go to Product page](#)

## Overview

Quantity:	400 µL
Target:	Glypican 6 (GPC6)
Binding Specificity:	AA 496-528, C-Term
Reactivity:	Human
Host:	Rabbit
Clonality:	Polyclonal
Conjugate:	This Glypican 6 antibody is un-conjugated
Application:	Western Blotting (WB), Flow Cytometry (FACS), Immunohistochemistry (Paraffin-embedded Sections) (IHC (p))

## Product Details

Immunogen:	This GPC6 antibody is generated from rabbits immunized with a KLH conjugated synthetic peptide between 496-528 amino acids from the C-terminal region of human GPC6.
Clone:	RB14543
Isotype:	Ig Fraction
Purification:	This antibody is prepared by Saturated Ammonium Sulfate (SAS) precipitation followed by dialysis against PBS.

## Target Details

Target:	Glypican 6 (GPC6)
Alternative Name:	GPC6 ( <a href="#">GPC6 Products</a> )

## Target Details

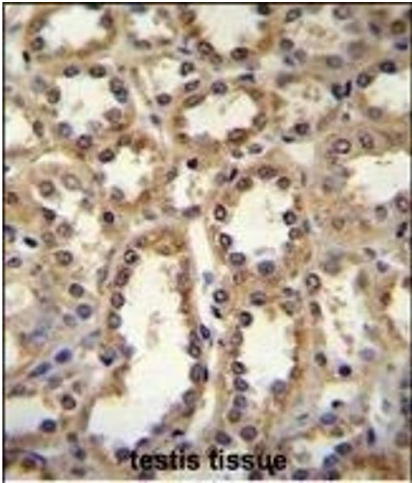
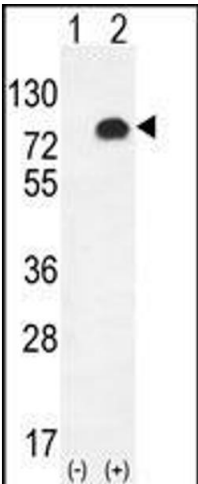
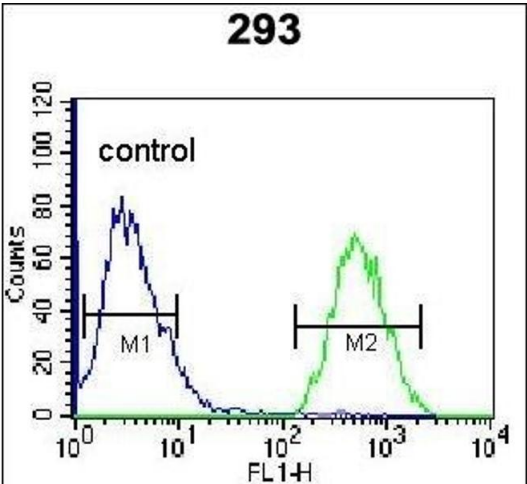
Background:	The glypicans comprise a family of glycosylphosphatidylinositol-anchored heparan sulfate proteoglycans, and they have been implicated in the control of cell growth and cell division. The glypican encoded by this gene is a putative cell surface coreceptor for growth factors, extracellular matrix proteins, proteases and anti-proteases. [provided by RefSeq].
Molecular Weight:	62736
Gene ID:	10082
NCBI Accession:	<a href="#">NP_005699</a>
UniProt:	<a href="#">Q9Y625</a>
Pathways:	<a href="#">Glycosaminoglycan Metabolic Process</a>

## Application Details

Application Notes:	WB: 1:1000. IHC-P: 1:50~100. FC: 1:10~50
Restrictions:	For Research Use only

## Handling

Format:	Liquid
Buffer:	Purified polyclonal antibody supplied in PBS with 0.09 % (W/V) sodium azide.
Preservative:	Sodium azide
Precaution of Use:	This product contains Sodium azide: a POISONOUS AND HAZARDOUS SUBSTANCE which should be handled by trained staff only.
Storage:	4 °C,-20 °C
Storage Comment:	Maintain refrigerated at 2-8 °C for up to 6 months. For long term storage store at -20 °C in small aliquots to prevent freeze-thaw cycles.
Expiry Date:	6 months



### Flow Cytometry

**Image 1.** GPC6 Antibody (C-term) (ABIN655620 and ABIN2845100) flow cytometric analysis of 293 cells (right histogram) compared to a negative control cell (left histogram). FITC-conjugated goat-anti-rabbit secondary antibodies were used for the analysis.

### Western Blotting

**Image 2.** Western blot analysis of GPC6 (arrow) using rabbit polyclonal GPC6 Antibody (C-term) (ABIN655620 and ABIN2845100). 293 cell lysates (2 µg/lane) either nontransfected (Lane 1) or transiently transfected (Lane 2) with the GPC6 gene.

### Immunohistochemistry (Paraffin-embedded Sections)

**Image 3.** GPC6 Antibody (C-term) (ABIN655620 and ABIN2845100) immunohistochemistry analysis in formalin fixed and paraffin embedded human kidney tissue followed by peroxidase conjugation of the secondary antibody and DAB staining. This data demonstrates the use of GPC6 Antibody (C-term) for immunohistochemistry. Clinical relevance has not been evaluated.