

Datasheet for ABIN655626
anti-Nucleolin antibody (AA 428-455)[Go to Product page](#)

4 Images

Overview

Quantity:	400 µL
Target:	Nucleolin (NCL)
Binding Specificity:	AA 428-455
Reactivity:	Human
Host:	Rabbit
Clonality:	Polyclonal
Conjugate:	This Nucleolin antibody is un-conjugated
Application:	Western Blotting (WB), Immunofluorescence (IF), Immunohistochemistry (Paraffin-embedded Sections) (IHC (p))

Product Details

Immunogen:	This NCL antibody is generated from rabbits immunized with a KLH conjugated synthetic peptide between 428-455 amino acids from the Central region of human NCL.
Clone:	RB17464
Isotype:	Ig Fraction
Predicted Reactivity:	Pr
Purification:	This antibody is purified through a protein A column, followed by peptide affinity purification.

Target Details

Target:	Nucleolin (NCL)
---------	-----------------

Target Details

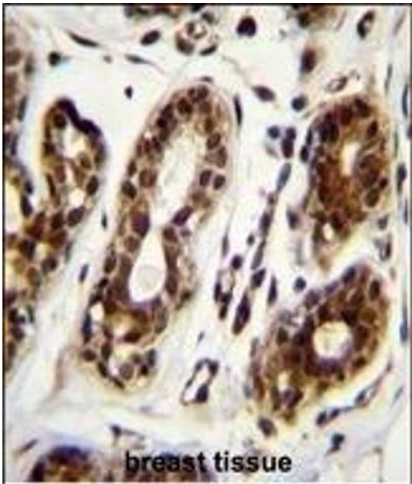
Alternative Name:	NCL (NCL Products)
Background:	Nucleolin (NCL), a eukaryotic nucleolar phosphoprotein, is involved in the synthesis and maturation of ribosomes. It is located mainly in dense fibrillar regions of the nucleolus. Human NCL gene consists of 14 exons with 13 introns and spans approximately 11kb. The intron 11 of the NCL gene encodes a small nucleolar RNA, termed U20.
Molecular Weight:	76614
Gene ID:	4691
NCBI Accession:	NP_005372
UniProt:	P19338
Pathways:	Ribonucleoprotein Complex Subunit Organization

Application Details

Application Notes:	IF: 1:10~50. WB: 1:1000. WB: 1:1000. IHC-P: 1:50~100
Restrictions:	For Research Use only

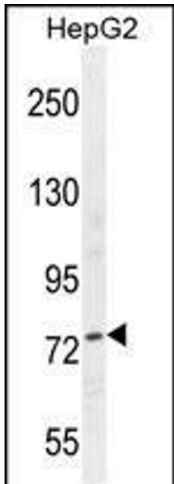
Handling

Format:	Liquid
Buffer:	Purified polyclonal antibody supplied in PBS with 0.09 % (W/V) sodium azide.
Preservative:	Sodium azide
Precaution of Use:	This product contains Sodium azide: a POISONOUS AND HAZARDOUS SUBSTANCE which should be handled by trained staff only.
Storage:	4 °C, -20 °C
Storage Comment:	Maintain refrigerated at 2-8 °C for up to 6 months. For long term storage store at -20 °C in small aliquots to prevent freeze-thaw cycles.
Expiry Date:	6 months



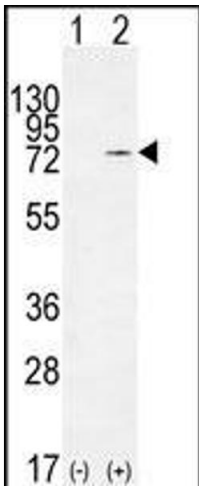
Immunohistochemistry (Paraffin-embedded Sections)

Image 1. NCL Antibody (Center) (ABIN655626 and ABIN2845105) immunohistochemistry analysis in formalin fixed and paraffin embedded human breast tissue followed by peroxidase conjugation of the secondary antibody and DAB staining. This data demonstrates the use of NCL Antibody (Center) for immunohistochemistry. Clinical relevance has not been evaluated.



Western Blotting

Image 2. NCL Antibody (Center) (ABIN655626 and ABIN2845105) western blot analysis in HepG2 cell line lysates (35 µg/lane). This demonstrates the NCL antibody detected the NCL protein (arrow).



Western Blotting

Image 3. Western blot analysis of NCL (arrow) using rabbit polyclonal NCL Antibody (Center) (ABIN655626 and ABIN2845105). 293 cell lysates (2 µg/lane) either nontransfected (Lane 1) or transiently transfected (Lane 2) with the NCL gene.

Please check the [product details page](#) for more images. Overall 4 images are available for ABIN655626.