

Datasheet for ABIN655628
anti-ITIH1 antibody (AA 606-635)[Go to Product page](#)

2 Images

Overview

Quantity:	400 µL
Target:	ITIH1
Binding Specificity:	AA 606-635
Reactivity:	Human
Host:	Rabbit
Clonality:	Polyclonal
Conjugate:	This ITIH1 antibody is un-conjugated
Application:	Western Blotting (WB), Flow Cytometry (FACS)

Product Details

Immunogen:	This ITIH1 antibody is generated from rabbits immunized with a KLH conjugated synthetic peptide between 606-635 amino acids from the Central region of human ITIH1.
Clone:	RB18296
Isotype:	Ig Fraction
Purification:	This antibody is purified through a protein A column, followed by peptide affinity purification.

Target Details

Target:	ITIH1
Alternative Name:	ITIH1 (ITIH1 Products)
Background:	The protein encoded by this gene is the heavy chain of a serine protease inhibitor that may

Target Details

serve to carry hyaluronan in plasma. This gene is part of a cluster of similar genes on chromosome 3. Multiple transcript variants encoding different isoforms have been found for this gene.

Molecular Weight: 101389

Gene ID: 3697

NCBI Accession: [NP_001159906](#), [NP_001159907](#), [NP_002206](#)

UniProt: [P19827](#)

Pathways: [Glycosaminoglycan Metabolic Process](#)

Application Details

Application Notes: WB: 1:1000. FC: 1:10~50

Restrictions: For Research Use only

Handling

Format: Liquid

Buffer: Purified polyclonal antibody supplied in PBS with 0.09 % (W/V) sodium azide.

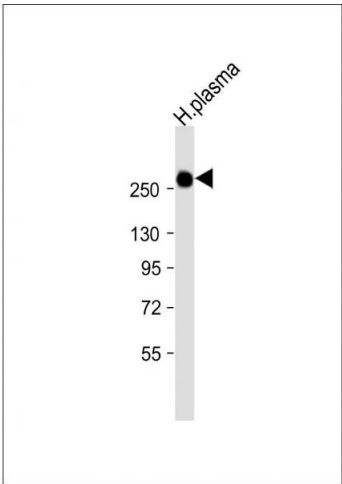
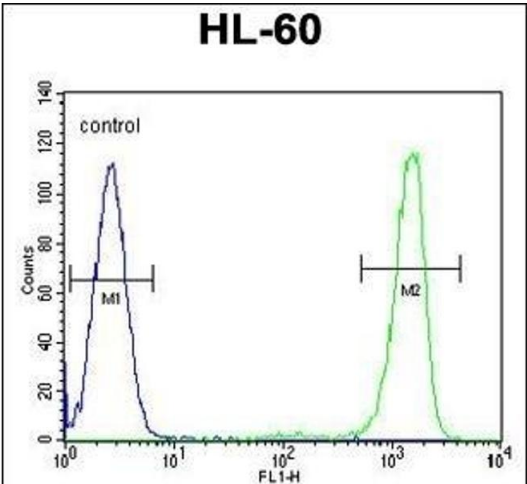
Preservative: Sodium azide

Precaution of Use: This product contains Sodium azide: a POISONOUS AND HAZARDOUS SUBSTANCE which should be handled by trained staff only.

Storage: 4 °C,-20 °C

Storage Comment: Maintain refrigerated at 2-8 °C for up to 6 months. For long term storage store at -20 °C in small aliquots to prevent freeze-thaw cycles.

Expiry Date: 6 months



Flow Cytometry

Image 1. ITIH1 Antibody (Center) (ABIN655628 and ABIN2845107) flow cytometric analysis of HL-60 cells (right histogram) compared to a negative control cell (left histogram). FITC-conjugated goat-anti-rabbit secondary antibodies were used for the analysis.

Western Blotting

Image 2. Anti-ITIH1 Antibody (Center) at 1:1000 dilution + human plasma lysate Lysates/proteins at 20 µg per lane. Secondary Goat Anti-Rabbit IgG, (H+L), Peroxidase conjugated at 1/10000 dilution. Predicted band size : 101 kDa Blocking/Dilution buffer: 5 % NFDm/TBST.