



Datasheet for ABIN655630
anti-PDE4B antibody (AA 189-217)



[Go to Product page](#)

2 Images

Overview

Quantity:	400 µL
Target:	PDE4B
Binding Specificity:	AA 189-217
Reactivity:	Human
Host:	Rabbit
Clonality:	Polyclonal
Conjugate:	This PDE4B antibody is un-conjugated
Application:	Western Blotting (WB), Flow Cytometry (FACS)

Product Details

Immunogen:	This PDE4B antibody is generated from rabbits immunized with a KLH conjugated synthetic peptide between 189-217 amino acids from the Central region of human PDE4B.
Clone:	RB18545
Isotype:	Ig Fraction
Purification:	This antibody is purified through a protein A column, followed by peptide affinity purification.

Target Details

Target:	PDE4B
Alternative Name:	PDE4B (PDE4B Products)
Background:	This gene is a member of the type IV, cyclic AMP (cAMP)-specific, cyclic nucleotide

Target Details

phosphodiesterase (PDE) family. Cyclic nucleotides are important second messengers that regulate and mediate a number of cellular responses to extracellular signals, such as hormones, light, and neurotransmitters. The cyclic nucleotide phosphodiesterases (PDEs) regulate the cellular concentrations of cyclic nucleotides and thereby play a role in signal transduction. This gene encodes a protein that specifically hydrolyzes cAMP. Altered activity of this protein has been associated with schizophrenia and bipolar affective disorder. Alternate transcriptional splice variants, encoding different isoforms, have been characterized.

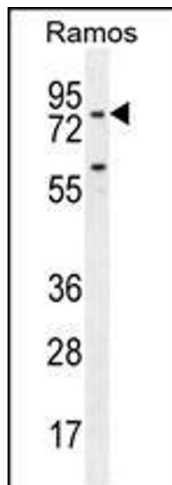
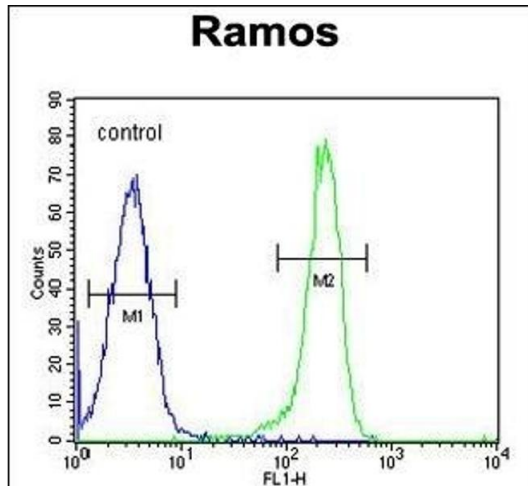
Molecular Weight:	83343
Gene ID:	5142
NCBI Accession:	NP_001032416 , NP_001032417 , NP_001032418 , NP_002591
UniProt:	Q07343
Pathways:	Cellular Response to Molecule of Bacterial Origin , cAMP Metabolic Process , Myometrial Relaxation and Contraction

Application Details

Application Notes:	WB: 1:1000. FC: 1:10~50
Restrictions:	For Research Use only

Handling

Format:	Liquid
Buffer:	Purified polyclonal antibody supplied in PBS with 0.09 % (W/V) sodium azide.
Preservative:	Sodium azide
Precaution of Use:	This product contains Sodium azide: a POISONOUS AND HAZARDOUS SUBSTANCE which should be handled by trained staff only.
Storage:	4 °C, -20 °C
Storage Comment:	Maintain refrigerated at 2-8 °C for up to 6 months. For long term storage store at -20 °C in small aliquots to prevent freeze-thaw cycles.
Expiry Date:	6 months



Flow Cytometry

Image 1. PDE4B Antibody (Center) (ABIN655630 and ABIN2845109) flow cytometric analysis of Ramos cells (right histogram) compared to a negative control cell (left histogram). FITC-conjugated goat-anti-rabbit secondary antibodies were used for the analysis.

Western Blotting

Image 2. PDE4B Antibody (Center) (ABIN655630 and ABIN2845109) western blot analysis in Ramos cell line lysates (35 µg/lane). This demonstrates the PDE4B antibody detected the PDE4B protein (arrow).