

Datasheet for ABIN655633
anti-CPA3 antibody (AA 255-284)

2 Images

[Go to Product page](#)

Overview

Quantity:	400 µL
Target:	CPA3
Binding Specificity:	AA 255-284
Reactivity:	Human
Host:	Rabbit
Clonality:	Polyclonal
Conjugate:	This CPA3 antibody is un-conjugated
Application:	Western Blotting (WB), Flow Cytometry (FACS)

Product Details

Immunogen:	This CPA3 antibody is generated from rabbits immunized with a KLH conjugated synthetic peptide between 255-284 amino acids from the Central region of human CPA3.
Clone:	RB19007
Isotype:	Ig Fraction
Purification:	This antibody is purified through a protein A column, followed by peptide affinity purification.

Target Details

Target:	CPA3
Alternative Name:	CPA3 (CPA3 Products)
Background:	Three different forms of human pancreatic procarboxypeptidase A have been isolated. This

Target Details

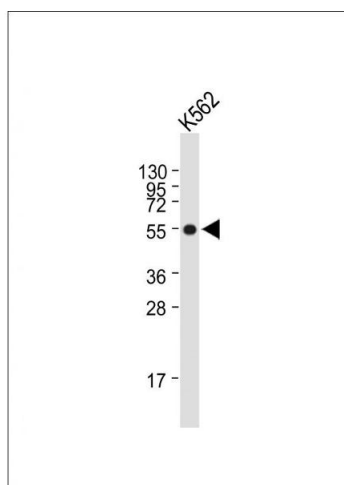
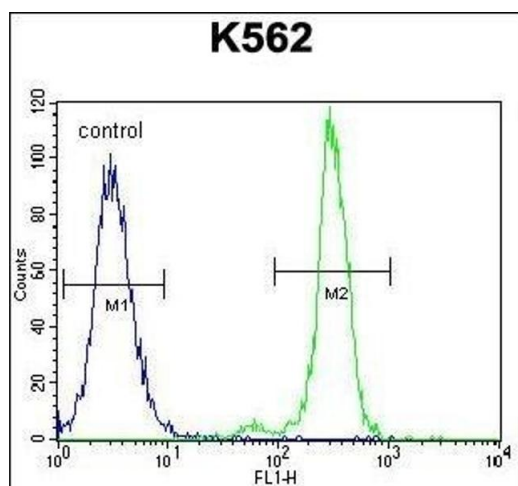
	gene encodes a form which is obtained as a binary complex of a procarboxypeptidase A with proproteinase E and functions as a secretory granule metalloexopeptidase.
Molecular Weight:	48670
Gene ID:	1359
NCBI Accession:	NP_001861
UniProt:	P15088
Pathways:	Peptide Hormone Metabolism , Regulation of Systemic Arterial Blood Pressure by Hormones

Application Details

Application Notes:	WB: 1:1000. FC: 1:10~50
Restrictions:	For Research Use only

Handling

Format:	Liquid
Buffer:	Purified polyclonal antibody supplied in PBS with 0.09 % (W/V) sodium azide.
Preservative:	Sodium azide
Precaution of Use:	This product contains Sodium azide: a POISONOUS AND HAZARDOUS SUBSTANCE which should be handled by trained staff only.
Storage:	4 °C, -20 °C
Storage Comment:	Maintain refrigerated at 2-8 °C for up to 6 months. For long term storage store at -20 °C in small aliquots to prevent freeze-thaw cycles.
Expiry Date:	6 months



Flow Cytometry

Image 1. C Antibody (Center) (ABIN655633 and ABIN2845112) flow cytometric analysis of K562 cells (right histogram) compared to a negative control cell (left histogram). FITC-conjugated goat-anti-rabbit secondary antibodies were used for the analysis.

Western Blotting

Image 2. Anti-C Antibody (Center) at 1:1000 dilution + K562 whole cell lysate. Lysates/proteins at 20 µg per lane. Secondary Goat Anti-Rabbit IgG, (H+L), Peroxidase conjugated at 1/10000 dilution. Predicted band size : 49 kDa. Blocking/Dilution buffer: 5 % NFDM/TBST.